

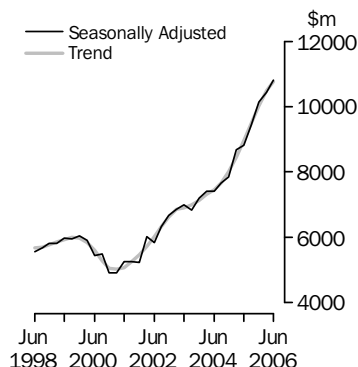
# ENGINEERING CONSTRUCTION ACTIVITY

AUSTRALIA

EMBARGO: 11.30AM (CANBERRA TIME) THURS 12 OCT 2006

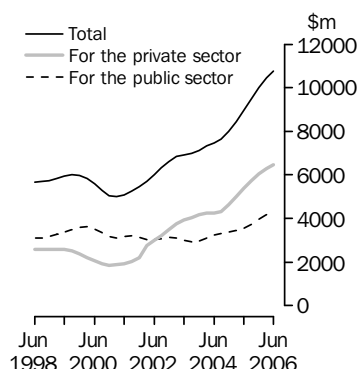
## Value of work done

Total engineering  
Volume terms



## Value of work done

Volume terms  
Trend estimates



## INQUIRIES

For further information about these and related statistics, contact the National Information and Referral Service on 1300 135 070 or James Inglis on Adelaide (08) 8237 7405.

## KEY FIGURES

	Jun qtr 06	Mar qtr 06 to Jun qtr 06	Jun qtr 05 to Jun qtr 06
	\$m	% change	% change

### TREND ESTIMATES VOLUME TERMS (a)

#### Value of work done

For the private sector	6 465.3	2.5	19.7
For the public sector(b)	4 291.4	2.9	20.5
Total engineering construction	10 778.8	2.9	20.3

### SEASONALLY ADJUSTED VOLUME TERMS (a)

#### Value of work done

For the private sector	6 508.4	5.4	24.4
For the public sector(b)	4 298.2	0.7	19.6
Total engineering construction	10 806.6	3.4	22.4

(a) Chain volume measures, reference year 2004–05.

(b) Includes work done by the private sector for the public sector and work done by the public sector.

## KEY POINTS

### VALUE OF CONSTRUCTION WORK DONE, VOLUME TERMS

#### TREND ESTIMATES

- The trend estimate for the value of total engineering construction work done rose 2.9% in the June 2006 quarter. The trend has now risen for twenty one consecutive quarters.
- The trend estimate for the value of work done for the private sector rose 2.5% in the June 2006 quarter. Work done for the public sector rose 2.9%.

#### SEASONALLY ADJUSTED ESTIMATES

- The seasonally adjusted estimate for the value of total engineering construction work done in the June 2006 quarter rose 3.4%, to \$10,806.6m. This follows a revised March quarter increase of 2.9% and is the eleventh consecutive quarterly rise in this series.
- The seasonally adjusted estimate for the value of work done for the private sector rose 5.4% in the June 2006 quarter. The value of work done for the public sector rose 0.7%, to \$4,298.2m.

#### ORIGINAL ESTIMATES

- The value of work done in the June 2006 quarter rose 15.7%, to \$11,358.1m following a 6.0% fall in the previous quarter.
- The value of work done for the private sector rose 11.0%, to \$6,439.8m in the June 2006 quarter, following a 12.2% fall in the previous quarter. Total work done for the public sector rose 22.6%, to \$4,918.3m.

## NOTES

### FORTHCOMING ISSUES

*ISSUE (Quarter)*

*RELEASE DATE*

September 2006

19 January 2007

December 2006

18 April 2007

.....

### CHANGES IN THIS ISSUE

There are no changes in this issue.

### SIGNIFICANT REVISIONS THIS QUARTER

Compared with the current price original terms estimates published in the previous issue of this publication:

- The March quarter 2006 estimates have been revised downwards by \$296m for work commenced, upwards \$138m for work done and downwards \$238.4m for work yet to be done. These revisions occurred predominantly in 'private for private' 'oil, gas, coal and other minerals' in Western Australia.
- The December quarter 2005 estimates have been revised downwards by \$46.8m for work commenced, upwards by \$49.8m for work done and downwards \$96m for work yet to be done. These revisions were predominantly in 'private for private' 'oil, gas, coal and other minerals' and 'other' in Western Australia.
- The September quarter 2005 estimates have been revised upwards by \$74m for work done and downwards \$74m for work yet to be done. These revisions occurred in 'private for private' 'oil, gas, coal and other minerals' in Western Australia.

### DATA NOTES

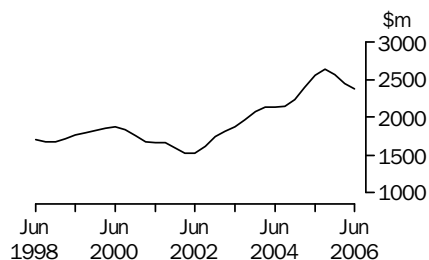
A new base year, 2004-05, has been introduced into the chain volume estimates which has resulted in revisions to growth rates in subsequent periods. In addition, the chain volume estimates have been re-referenced to 2004-05, thereby preserving additivity in the quarters after the reference year. Re-referencing affect the levels of, but not the movements in, chain volume estimates.

Dennis Trewin  
Australian Statistician

## VALUE OF WORK DONE STATES AND TERRITORIES

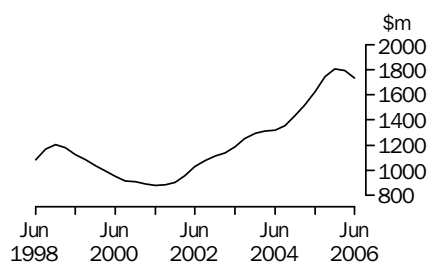
### CHAIN VOLUME MEASURES—TREND ESTIMATES

#### NEW SOUTH WALES



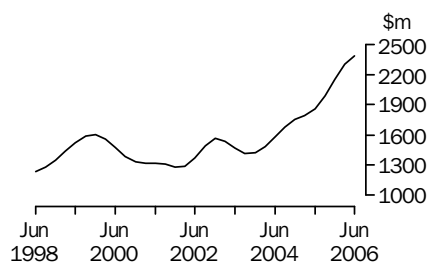
The trend estimate for the value of work done fell 3.1% in the June 2006 quarter, the third consecutive quarterly decline.

#### VICTORIA



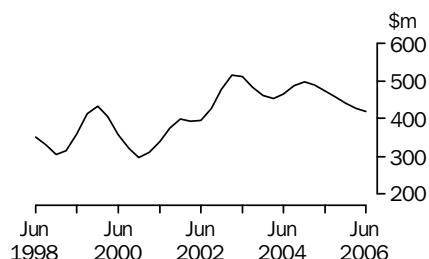
The trend estimate for the value of work done is now showing falls for the past two quarters after rising for the previous eighteen quarters.

#### QUEENSLAND



The trend estimate for the value of work done rose 3.7% in the June 2006 quarter, continuing the period of strong growth since December 2003.

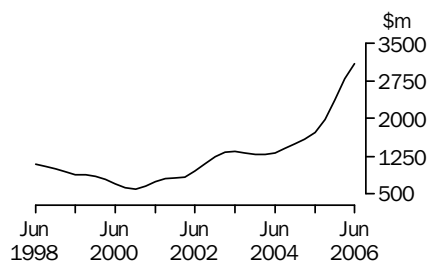
#### SOUTH AUSTRALIA



The trend estimate for the value of work done has continued its decline for the sixth consecutive quarter.

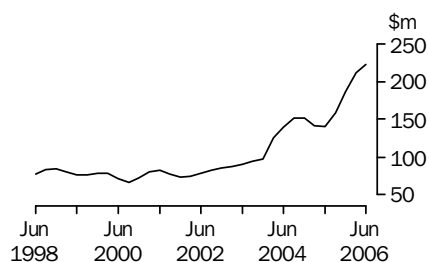
## VALUE OF WORK DONE STATES AND TERRITORIES *continued*

### WESTERN AUSTRALIA



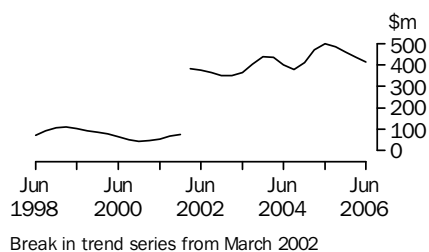
The trend estimate for the value of work done continued to grow strongly with an increase of 10.7% in the June 2006 quarter, which followed a 17.2% rise in the previous quarter.

### TASMANIA



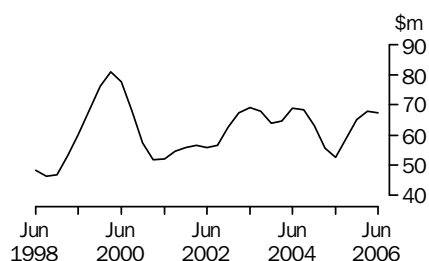
The trend estimate for the value of work done has risen strongly for four consecutive quarters.

### NORTHERN TERRITORY



The trend estimate for the value of work done fell 5.4% in the June 2006 quarter, following a 5.3% fall in the previous quarter.

### AUSTRALIAN CAPITAL TERRITORY



The trend estimate for the value of work done fell 0.7% in the June 2006 quarter, after three quarters of strong growth.

## LIST OF TABLES

page

### TABLES

<b>1</b>	Value of work done, chain volume measures . . . . .	6
<b>2</b>	Value of work done, chain volume measures, change from previous period . . . . .	7
<b>3</b>	Value of work done, states and territories, chain volume measures . . . . .	8
<b>4</b>	Value of work done, states and territories, chain volume measures, change from previous period . . . . .	9
<b>5</b>	Value of work done . . . . .	10
<b>6</b>	Value of work done, change from previous period . . . . .	11
<b>7</b>	Value of work done, states and territories . . . . .	12
<b>8</b>	Value of work done, states and territories, change from previous period . . . .	13
<b>9</b>	Activity, states and territories, original . . . . .	14
<b>10</b>	Activity, states and territories, change from previous period, original . . . . .	15
<b>11</b>	Activity, by type, original . . . . .	16
<b>12</b>	Work commenced by the private sector, by type, original . . . . .	18
<b>13</b>	Work done by the private sector, by type, original . . . . .	20
<b>14</b>	Work yet to be done by the private sector, by type, original . . . . .	22
<b>15</b>	Activity by the public sector, by type, original . . . . .	24
<b>16</b>	Activity for the public sector, by type, original . . . . .	26
<b>17</b>	Activity, by type, New South Wales, original . . . . .	28
<b>18</b>	Activity, by type, Victoria, original . . . . .	29
<b>19</b>	Activity, by type, Queensland, original . . . . .	30
<b>20</b>	Activity, by type, South Australia, original . . . . .	31
<b>21</b>	Activity, by type, Western Australia, original . . . . .	32
<b>22</b>	Activity, by type, Tasmania, original . . . . .	33
<b>23</b>	Activity, by type, Northern Territory, original . . . . .	34
<b>24</b>	Activity, by type, Australian Capital Territory, original . . . . .	35
<b>25</b>	Value of work done by the private sector, states and territories, original . . . .	36
<b>26</b>	Value of work done by the public sector, states and territories, original . . . .	37
<b>27</b>	Value of work done for the public sector, states and territories, original . . . .	38
<b>28</b>	Relative standard errors, Australia, by sector . . . . .	39
<b>29</b>	Relative standard errors, states and territories, by type of work . . . . .	40

## VALUE OF WORK DONE, Chain volume measures(a)

## BY THE PRIVATE SECTOR

	<i>For the private sector</i>	<i>For the public sector</i>	<i>Total</i>	<i>By the public sector</i>	<i>Total for the public sector(b)</i>	<i>Total</i>
<i>Period</i>	\$m	\$m	\$m	\$m	\$m	\$m

## ORIGINAL

<b>2003-04</b>	16 714.0	4 327.0	21 036.5	7 808.6	12 131.8	<b>28 846.3</b>
<b>2004-05</b>	19 214.3	5 645.2	24 859.5	8 178.0	13 823.2	<b>33 037.5</b>
<b>2005-06</b>	24 667.2	6 169.5	30 836.7	10 023.3	16 192.9	<b>40 860.1</b>
<b>2005</b>						
March	4 912.1	1 400.5	6 312.4	1 860.8	3 261.7	<b>8 172.6</b>
June	5 189.8	1 636.6	6 827.2	2 463.2	4 099.7	<b>9 290.6</b>
September	5 822.5	1 408.1	7 230.6	2 012.5	3 420.6	<b>9 243.1</b>
December	6 603.7	1 546.8	8 150.5	2 294.8	3 841.6	<b>10 445.3</b>
<b>2006</b>						
March	5 801.2	1 561.6	7 362.7	2 450.8	4 012.4	<b>9 813.6</b>
June	6 439.8	1 653.1	8 092.9	3 265.2	4 918.3	<b>11 358.1</b>

## SEASONALLY ADJUSTED

<b>2005</b>						
March	5 215.8	1 449.5	6 665.0	2 012.2	3 461.7	<b>8 676.7</b>
June	5 233.2	1 546.0	6 779.3	2 049.0	3 595.2	<b>8 827.9</b>
September	5 732.6	1 453.5	7 186.2	2 264.2	3 717.7	<b>9 450.3</b>
December	6 249.2	1 552.8	7 802.1	2 353.9	3 906.7	<b>10 156.0</b>
<b>2006</b>						
March	6 176.9	1 605.4	7 782.3	2 664.8	4 270.3	<b>10 447.1</b>
June	6 508.4	1 557.7	8 066.2	2 740.5	4 298.2	<b>10 806.6</b>

## TREND

<b>2005</b>						
March	4 996.7	1 445.9	6 442.6	2 013.6	3 458.9	<b>8 455.2</b>
June	5 400.3	1 488.9	6 889.1	2 071.5	3 560.4	<b>8 960.1</b>
September	5 756.5	1 519.2	7 275.8	2 226.0	3 745.3	<b>9 501.7</b>
December	6 061.7	1 542.7	7 606.4	2 419.9	3 962.9	<b>10 021.1</b>
<b>2006</b>						
March	6 309.0	1 569.8	7 879.9	2 601.9	4 171.8	<b>10 479.5</b>
June	6 465.3	1 586.0	8 040.4	2 707.3	4 291.4	<b>10 778.8</b>

- (a) Reference year for chain volume measures is 2004-05. See paragraphs 24-27 of the Explanatory Notes.
- (b) Includes work done by the private sector for the public sector and work done by the public sector.

# VALUE OF WORK DONE, Chain volume measures(a)—Change from previous period

## BY THE PRIVATE SECTOR

<i>Period</i>	<i>For the private sector</i>	<i>For the public sector</i>	<i>Total</i>	<i>By the public sector</i>	<i>Total for the public sector(b)</i>	<i>Total</i>
	%	%	%	%	%	%
ORIGINAL						
<b>2003–04</b>	15.6	–0.9	11.7	–2.5	–1.9	<b>7.5</b>
<b>2004–05</b>	15.0	30.5	18.2	4.7	13.9	<b>14.5</b>
<b>2005–06</b>	28.4	9.3	24.0	22.6	17.1	<b>23.7</b>
<b>2005</b>						
March	1.7	4.9	2.4	–3.7	–0.1	<b>1.0</b>
June	5.7	16.9	8.2	32.4	25.7	<b>13.7</b>
September	12.2	–14.0	5.9	–18.3	–16.6	<b>–0.5</b>
December	13.4	9.8	12.7	14.0	12.3	<b>13.0</b>
<b>2006</b>						
March	–12.2	1.0	–9.7	6.8	4.4	<b>–6.0</b>
June	11.0	5.9	9.9	33.2	22.6	<b>15.7</b>

## SEASONALLY ADJUSTED

<b>2005</b>						
March	14.3	8.4	12.9	2.7	5.0	<b>10.4</b>
June	0.3	6.7	1.7	1.8	3.9	<b>1.7</b>
September	9.5	–6.0	6.0	10.5	3.4	<b>7.1</b>
December	9.0	6.8	8.6	4.0	5.1	<b>7.5</b>
<b>2006</b>						
March	–1.2	3.4	–0.3	13.2	9.3	<b>2.9</b>
June	5.4	–3.0	3.6	2.8	0.7	<b>3.4</b>

## TREND

<b>2005</b>						
March	8.3	5.3	7.6	–0.3	1.9	<b>5.6</b>
June	8.1	3.0	6.9	2.9	2.9	<b>6.0</b>
September	6.6	2.0	5.6	7.5	5.2	<b>6.0</b>
December	5.3	1.5	4.5	8.7	5.8	<b>5.5</b>
<b>2006</b>						
March	4.1	1.8	3.6	7.5	5.3	<b>4.6</b>
June	2.5	1.0	2.0	4.1	2.9	<b>2.9</b>

(a) Reference year for chain volume measures is 2004–05. See paragraphs 24–27 of the Explanatory Notes.

(b) Includes work done by the private sector for the public sector and work done by the public sector.

## VALUE OF WORK DONE, States and territories—Chain volume measures(a)

	NSW	Vic.	Qld	SA	WA	Tas.	NT	ACT	Aust.
<i>Period</i>	\$m	\$m	\$m	\$m	\$m	\$m	\$m	\$m	\$m
ORIGINAL									
<b>2003-04</b>	8 292.9	5 187.8	5 860.8	1 859.5	5 155.7	514.0	1 720.3	253.6	<b>28 846.3</b>
<b>2004-05</b>	9 340.4	5 911.3	7 083.7	1 965.1	6 162.3	596.2	1 731.1	247.3	<b>33 037.5</b>
<b>2005-06</b>	10 025.8	7 065.7	8 881.6	1 729.9	10 347.2	781.0	1 771.5	257.3	<b>40 860.1</b>
<b>2005</b>									
March	2 191.2	1 565.8	1 687.6	437.0	1 650.0	166.2	425.2	48.8	<b>8 172.6</b>
June	2 797.7	1 690.8	1 880.5	540.1	1 624.9	158.3	532.3	65.0	<b>9 290.6</b>
September	2 602.9	1 551.6	2 056.1	409.9	1 936.7	124.0	508.8	53.2	<b>9 243.1</b>
December	2 623.7	1 967.1	2 117.4	469.4	2 572.9	175.1	459.5	60.1	<b>10 445.3</b>
<b>2006</b>									
March	2 226.7	1 765.3	2 245.8	389.3	2 444.4	236.6	430.7	74.9	<b>9 813.6</b>
June	2 572.5	1 781.8	2 462.4	461.3	3 393.2	245.3	372.5	69.1	<b>11 358.1</b>
SEASONALLY ADJUSTED									
<b>2005</b>									
March	2 355.3	1 565.8	1 779.0	471.8	1 802.9	150.7	505.9	49.4	<b>8 676.7</b>
June	2 587.3	1 595.7	1 821.5	489.4	1 514.3	137.3	497.7	56.5	<b>8 827.9</b>
September	2 673.5	1 678.1	2 032.4	442.0	1 996.9	147.7	478.6	56.6	<b>9 450.3</b>
December	2 594.1	1 950.1	2 095.4	449.4	2 457.5	193.2	441.8	63.5	<b>10 156.0</b>
<b>2006</b>									
March	2 377.4	1 759.9	2 361.5	422.6	2 702.3	219.9	476.7	76.3	<b>10 447.1</b>
June	2 380.9	1 677.6	2 392.3	415.9	3 190.6	220.3	374.4	60.8	<b>10 806.6</b>
TREND									
<b>2005</b>									
March	2 396.8	1 515.3	1 793.8	488.6	1 587.1	142.0	468.7	55.6	<b>8 455.2</b>
June	2 559.6	1 627.2	1 859.3	472.2	1 726.4	140.9	496.7	52.6	<b>8 960.1</b>
September	2 632.6	1 747.3	1 987.4	456.6	1 984.1	158.8	485.6	58.8	<b>9 501.7</b>
December	2 563.4	1 807.5	2 153.7	440.5	2 373.0	186.6	460.7	65.2	<b>10 021.1</b>
<b>2006</b>									
March	2 450.0	1 795.2	2 298.8	426.3	2 782.3	211.9	436.3	67.9	<b>10 479.5</b>
June	2 373.2	1 734.6	2 384.2	420.0	3 081.2	222.9	412.5	67.5	<b>10 778.8</b>

(a) Reference year for chain volume measures is 2004-05. See paragraphs 24-27 of the Explanatory Notes.



# VALUE OF WORK DONE, States and territories—Chain volume measures(a)—Change from previous period

	NSW	Vic.	Qld	SA	WA	Tas.	NT	ACT	Aust.
Period	%	%	%	%	%	%	%	%	%
ORIGINAL									
<b>2003–04</b>	17.8	13.9	–4.0	–2.5	0.6	28.1	18.8	–2.9	<b>7.5</b>
<b>2004–05</b>	12.6	13.9	20.9	5.7	19.5	16.0	0.6	–2.5	<b>14.5</b>
<b>2005–06</b>	7.3	19.5	25.4	–12.0	67.9	31.0	2.3	4.0	<b>23.7</b>
<b>2005</b>									
March	–2.3	10.0	–6.0	–16.7	10.0	29.6	0.9	–16.5	<b>1.0</b>
June	27.7	8.0	11.4	23.6	–1.5	–4.8	25.2	33.2	<b>13.7</b>
September	–7.0	–8.2	9.3	–24.1	19.2	–21.7	–4.4	–18.2	<b>–0.5</b>
December	0.8	26.8	3.0	14.5	32.8	41.2	–9.7	13.1	<b>13.0</b>
<b>2006</b>									
March	–15.1	–10.3	6.1	–17.1	–5.0	35.1	–6.3	24.5	<b>–6.0</b>
June	15.5	0.9	9.6	18.5	38.8	3.7	–13.5	–7.7	<b>15.7</b>
SEASONALLY ADJUSTED									
<b>2005</b>									
March	6.1	10.5	0.2	–6.4	26.7	9.9	26.5	–18.9	<b>10.4</b>
June	9.9	1.9	2.4	3.7	–16.0	–8.9	–1.6	14.2	<b>1.7</b>
September	3.3	5.2	11.6	–9.7	31.9	7.5	–3.8	0.3	<b>7.1</b>
December	–3.0	16.2	3.1	1.7	23.1	30.8	–7.7	12.2	<b>7.5</b>
<b>2006</b>									
March	–8.4	–9.8	12.7	–6.0	10.0	13.8	7.9	20.0	<b>2.9</b>
June	0.1	–4.7	1.3	–1.6	18.1	0.2	–21.5	–20.2	<b>3.4</b>
TREND									
<b>2005</b>									
March	7.5	5.8	2.2	–1.6	5.5	–6.1	14.4	–11.8	<b>5.6</b>
June	6.8	7.4	3.7	–3.4	8.8	–0.8	6.0	–5.5	<b>6.0</b>
September	2.8	7.4	6.9	–3.3	14.9	12.7	–2.2	12.0	<b>6.0</b>
December	–2.6	3.4	8.4	–3.5	19.6	17.5	–5.1	10.8	<b>5.5</b>
<b>2006</b>									
March	–4.4	–0.7	6.7	–3.2	17.2	13.6	–5.3	4.2	<b>4.6</b>
June	–3.1	–3.4	3.7	–1.5	10.7	5.2	–5.4	–0.7	<b>2.9</b>

(a) Reference year for chain volume measures is 2004–05. See paragraph 24–27 of the Explanatory Notes.

## VALUE OF WORK DONE

## BY THE PRIVATE SECTOR

	<i>For the private sector</i>	<i>For the public sector</i>	<i>Total</i>	<i>By the public sector</i>	<i>Total for the public sector(a)</i>	<i>Total</i>
<i>Period</i>	\$m	\$m	\$m	\$m	\$m	\$m

## ORIGINAL

<b>2003-04</b>	15 837.1	4 141.1	19 978.1	7 428.8	11 569.9	<b>27 407.0</b>
<b>2004-05</b>	19 214.2	5 645.2	24 859.4	8 178.0	13 823.2	<b>33 037.4</b>
<b>2005-06</b>	25 962.4	6 527.8	32 490.1	10 638.3	17 166.1	<b>43 128.5</b>
<b>2005</b>						
March	4 945.2	1 403.8	6 349.0	1 867.0	3 270.8	<b>8 216.0</b>
June	5 285.7	1 669.0	6 954.7	2 519.5	4 188.5	<b>9 474.2</b>
September	5 991.2	1 460.7	7 451.9	2 081.9	3 542.6	<b>9 533.7</b>
December	6 868.7	1 626.1	8 494.8	2 398.0	4 024.1	<b>10 892.7</b>
<b>2006</b>						
March	6 090.6	1 655.1	7 745.7	2 598.9	4 254.0	<b>10 344.6</b>
June	7 011.9	1 785.9	8 797.8	3 559.6	5 345.5	<b>12 357.4</b>

## SEASONALLY ADJUSTED

<b>2005</b>						
March	5 265.8	1 450.9	6 716.7	2 022.0	3 472.9	<b>8 738.7</b>
June	5 342.1	1 574.2	6 916.3	2 095.3	3 669.5	<b>9 011.6</b>
September	5 904.4	1 505.3	7 409.8	2 334.5	3 839.8	<b>9 744.3</b>
December	6 501.0	1 629.9	8 130.9	2 446.0	4 075.9	<b>10 576.9</b>
<b>2006</b>						
March	6 482.7	1 698.5	8 181.2	2 805.7	4 504.2	<b>10 986.9</b>
June	7 082.3	1 680.0	8 762.3	2 963.8	4 643.8	<b>11 726.1</b>

## TREND

<b>2005</b>						
March	5 039.6	1 450.3	6 490.0	2 026.2	3 476.5	<b>8 516.1</b>
June	5 510.1	1 516.1	7 026.2	2 112.8	3 628.9	<b>9 139.0</b>
September	5 922.2	1 570.6	7 492.7	2 292.4	3 863.0	<b>9 785.1</b>
December	6 310.5	1 616.9	7 927.5	2 517.1	4 134.0	<b>10 444.5</b>
<b>2006</b>						
March	6 675.8	1 666.7	8 342.5	2 749.7	4 416.5	<b>11 092.3</b>
June	6 961.7	1 710.3	8 672.0	2 936.4	4 646.6	<b>11 608.3</b>

(a) Includes work done by the private sector for the public sector and work done by the public sector.

## VALUE OF WORK DONE, Change from previous period

## BY THE PRIVATE SECTOR

<i>Period</i>	<i>For the private sector</i>	<i>For the public sector</i>	<i>Total</i>	<i>By the public sector</i>	<i>Total for the public sector(a)</i>	<i>Total</i>
	%	%	%	%	%	%

## ORIGINAL

<b>2003-04</b>	19.2	2.4	15.3	0.3	1.1	<b>10.8</b>
<b>2004-05</b>	21.3	36.3	24.4	10.1	19.5	<b>20.5</b>
<b>2005-06</b>	35.1	15.6	30.7	30.1	24.2	<b>30.5</b>
<b>2005</b>						
March	3.3	6.0	3.9	-2.3	1.1	<b>2.4</b>
June	6.9	18.9	9.5	34.9	28.1	<b>15.3</b>
September	13.3	-12.5	7.1	-17.4	-15.4	<b>0.6</b>
December	14.6	11.3	14.0	15.2	13.6	<b>14.3</b>
<b>2006</b>						
March	-11.3	1.8	-8.8	8.4	5.7	<b>-5.0</b>
June	15.1	7.9	13.6	37.0	25.7	<b>19.5</b>

## SEASONALLY ADJUSTED

<b>2005</b>						
March	16.1	9.5	14.6	4.1	6.3	<b>12.0</b>
June	1.4	8.5	3.0	3.6	5.7	<b>3.1</b>
September	10.5	-4.4	7.1	11.4	4.6	<b>8.1</b>
December	10.1	8.3	9.7	4.8	6.1	<b>8.5</b>
<b>2006</b>						
March	-0.3	4.2	0.6	14.7	10.5	<b>3.9</b>
June	9.2	-1.1	7.1	5.6	3.1	<b>6.7</b>

## TREND

<b>2005</b>						
March	9.6	6.7	8.9	1.2	3.4	<b>7.0</b>
June	9.3	4.5	8.3	4.3	4.4	<b>7.3</b>
September	7.5	3.6	6.6	8.5	6.4	<b>7.1</b>
December	6.6	3.0	5.8	9.8	7.0	<b>6.7</b>
<b>2006</b>						
March	5.8	3.1	5.2	9.2	6.8	<b>6.2</b>
June	4.3	2.6	3.9	6.8	5.2	<b>4.7</b>

(a) Includes work done by the private sector for the public sector and work done by the public sector.

## VALUE OF WORK DONE, States and territories

	NSW	Vic.	Qld	SA	WA	Tas.	NT	ACT	Aust.
<i>Period</i>	\$m	\$m	\$m	\$m	\$m	\$m	\$m	\$m	\$m
ORIGINAL									
<b>2003-04</b>	7 888.2	4 983.3	5 539.9	1 764.7	4 880.6	485.5	1 619.8	244.9	<b>27 407.0</b>
<b>2004-05</b>	9 340.4	5 911.3	7 083.7	1 965.1	6 162.3	596.2	1 731.1	247.3	<b>33 037.4</b>
<b>2005-06</b>	10 542.8	7 405.9	9 450.0	1 827.9	10 928.0	854.1	1 850.1	269.6	<b>43 128.5</b>
<b>2005</b>									
March	2 198.6	1 571.8	1 698.2	439.1	1 663.7	167.5	428.3	48.8	<b>8 216.0</b>
June	2 853.1	1 714.8	1 924.3	552.4	1 659.3	162.7	541.4	66.3	<b>9 474.2</b>
September	2 681.8	1 593.6	2 132.7	425.7	1 994.7	130.1	520.5	54.5	<b>9 533.7</b>
December	2 733.7	2 040.4	2 225.0	491.6	2 677.5	186.2	476.2	62.2	<b>10 892.7</b>
<b>2006</b>									
March	2 347.3	1 850.6	2 385.0	410.3	2 566.1	257.8	449.3	78.3	<b>10 344.6</b>
June	2 779.9	1 921.4	2 707.4	500.3	3 689.7	280.0	404.1	74.6	<b>12 357.4</b>
SEASONALLY ADJUSTED									
<b>2005</b>									
March	2 358.6	1 566.9	1 791.6	473.8	1 826.7	153.7	512.2	50.0	<b>8 738.7</b>
June	2 634.6	1 614.3	1 865.9	500.3	1 550.7	142.0	507.9	58.0	<b>9 011.6</b>
September	2 754.4	1 721.4	2 110.3	458.6	2 055.4	154.2	490.3	58.3	<b>9 744.3</b>
December	2 705.4	2 021.6	2 204.0	470.7	2 549.3	202.8	457.9	65.8	<b>10 576.9</b>
<b>2006</b>									
March	2 510.4	1 844.7	2 510.3	445.7	2 822.7	235.2	496.9	79.9	<b>10 986.9</b>
June	2 577.9	1 809.6	2 632.8	451.4	3 448.7	246.1	405.6	65.7	<b>11 726.1</b>
TREND									
<b>2005</b>									
March	2 404.3	1 516.6	1 806.3	491.5	1 604.6	143.5	473.9	56.4	<b>8 516.1</b>
June	2 603.8	1 648.1	1 903.0	482.4	1 765.2	145.3	506.2	53.8	<b>9 139.0</b>
September	2 710.4	1 789.7	2 060.8	472.5	2 039.6	165.4	498.0	60.6	<b>9 785.1</b>
December	2 674.2	1 874.6	2 262.0	462.0	2 461.6	196.3	477.7	67.5	<b>10 444.5</b>
<b>2006</b>									
March	2 596.5	1 889.9	2 460.1	452.9	2 931.1	228.0	458.6	71.4	<b>11 092.3</b>
June	2 530.2	1 854.3	2 632.9	449.2	3 339.5	253.0	434.7	72.9	<b>11 608.3</b>

## VALUE OF WORK DONE, States and territories—Change from previous period

	NSW	Vic.	Qld	SA	WA	Tas.	NT	ACT	Aust.
Period	%	%	%	%	%	%	%	%	%
ORIGINAL									
<b>2003–04</b>	21.7	17.4	-0.3	-0.1	3.1	33.4	21.6	0.1	<b>10.8</b>
<b>2004–05</b>	18.4	18.6	27.9	11.4	26.3	22.8	6.9	1.0	<b>20.5</b>
<b>2005–06</b>	12.9	25.3	33.4	-7.0	77.3	43.3	6.9	9.0	<b>30.5</b>
<b>2005</b>									
March	-1.1	11.0	-4.4	-15.7	12.1	32.6	2.7	-16.0	<b>2.4</b>
June	29.8	9.1	13.3	25.8	-0.3	-2.9	26.4	35.7	<b>15.3</b>
September	-6.0	-7.1	10.8	-22.9	20.2	-20.0	-3.9	-17.8	<b>0.6</b>
December	1.9	28.0	4.3	15.5	34.2	43.1	-8.5	14.1	<b>14.3</b>
<b>2006</b>									
March	-14.1	-9.3	7.2	-16.5	-4.2	38.5	-5.7	26.0	<b>-5.0</b>
June	18.4	3.8	13.5	21.9	43.8	8.6	-10.1	-4.8	<b>19.5</b>
SEASONALLY ADJUSTED									
<b>2005</b>									
March	7.4	11.5	1.9	-5.3	29.0	12.7	28.6	-18.4	<b>12.0</b>
June	11.7	3.0	4.1	5.6	-15.1	-7.6	-0.8	16.1	<b>3.1</b>
September	4.5	6.6	13.1	-8.3	32.5	8.6	-3.5	0.4	<b>8.1</b>
December	-1.8	17.4	4.4	2.6	24.0	31.5	-6.6	13.0	<b>8.5</b>
<b>2006</b>									
March	-7.2	-8.8	13.9	-5.3	10.7	16.0	8.5	21.3	<b>3.9</b>
June	2.7	-1.9	4.9	1.3	22.2	4.7	-18.4	-17.7	<b>6.7</b>
TREND									
<b>2005</b>									
March	8.9	6.9	3.7	-0.2	6.9	-4.0	15.6	-11.0	<b>7.0</b>
June	8.3	8.7	5.3	-1.9	10.0	1.2	6.8	-4.6	<b>7.3</b>
September	4.1	8.6	8.3	-2.1	15.5	13.9	-1.6	12.6	<b>7.1</b>
December	-1.3	4.7	9.8	-2.2	20.7	18.6	-4.1	11.4	<b>6.7</b>
<b>2006</b>									
March	-2.9	0.8	8.8	-2.0	19.1	16.2	-4.0	5.8	<b>6.2</b>
June	-2.6	-1.9	7.0	-0.8	13.9	11.0	-5.2	2.2	<b>4.7</b>

ACTIVITY, States and territories: **Original**

	NSW	Vic.	Qld	SA	WA	Tas.	NT	ACT	Aust.
<i>Period</i>	\$m	\$m	\$m	\$m	\$m	\$m	\$m	\$m	\$m
.....									
VALUE OF WORK COMMENCED DURING PERIOD									
<b>2003-04</b>	8 463.0	4 583.0	5 957.5	1 496.5	4 871.2	721.7	1 026.2	267.4	<b>27 386.5</b>
<b>2004-05</b>	9 283.0	8 744.5	9 432.8	2 085.3	8 889.5	483.1	2 502.1	234.8	<b>41 655.2</b>
<b>2005-06</b>	10 096.4	5 995.3	11 443.7	2 318.8	15 964.5	834.5	358.0	344.9	<b>47 356.2</b>
<b>2005</b>									
March	2 624.4	4 319.7	2 319.1	455.7	2 943.4	^ 114.4	^ 56.3	62.1	<b>12 895.1</b>
June	2 494.5	1 256.0	2 135.5	357.2	1 277.3	109.5	209.0	59.3	<b>7 898.2</b>
September	2 573.1	1 303.4	2 493.8	406.2	3 671.9	^ 97.6	134.5	51.2	<b>10 731.8</b>
December	2 332.8	1 741.8	2 511.7	869.0	3 943.7	86.6	^ 64.6	118.3	<b>11 668.4</b>
<b>2006</b>									
March	2 093.5	1 609.2	3 428.1	412.1	1 118.3	379.1	66.0	81.3	<b>9 187.6</b>
June	3 097.1	1 340.9	3 010.1	631.3	7 230.6	271.2	92.9	94.2	<b>15 768.3</b>
.....									
VALUE OF WORK DONE DURING PERIOD									
<b>2003-04</b>	7 888.2	4 983.3	5 539.9	1 764.7	4 880.6	485.5	1 619.8	244.9	<b>27 407.0</b>
<b>2004-05</b>	9 340.4	5 911.3	7 083.7	1 965.1	6 162.3	596.2	1 731.1	247.3	<b>33 037.4</b>
<b>2005-06</b>	10 542.8	7 405.9	9 450.0	1 827.9	10 928.0	854.1	1 850.1	269.6	<b>43 128.5</b>
<b>2005</b>									
March	2 198.6	1 571.8	1 698.2	439.1	1 663.7	167.5	428.3	48.8	<b>8 216.0</b>
June	2 853.1	1 714.8	1 924.3	552.4	1 659.3	162.7	541.4	66.3	<b>9 474.2</b>
September	2 681.8	1 593.6	2 132.7	425.7	1 994.7	130.1	520.5	54.5	<b>9 533.7</b>
December	2 733.7	2 040.4	2 225.0	491.6	2 677.5	186.2	476.2	62.2	<b>10 892.7</b>
<b>2006</b>									
March	2 347.3	1 850.6	2 385.0	410.3	2 566.1	257.8	449.3	78.3	<b>10 344.6</b>
June	2 779.9	1 921.4	2 707.4	500.3	3 689.7	280.0	404.1	74.6	<b>12 357.4</b>
.....									
VALUE OF WORK YET TO BE DONE									
<b>2003-04</b>	4 552.7	1 658.7	2 323.3	318.7	2 803.1	332.8	1 360.5	40.8	<b>13 390.6</b>
<b>2004-05</b>	3 807.1	4 992.5	4 166.5	392.3	6 477.8	184.1	1 830.6	15.3	<b>21 866.1</b>
<b>2005-06</b>	2 908.1	3 423.7	5 265.2	791.0	11 192.2	210.5	413.6	70.0	<b>24 274.3</b>
<b>2005</b>									
March	4 371.1	5 145.0	4 114.3	574.9	6 243.7	161.5	2 179.7	25.1	<b>22 815.4</b>
June	3 807.1	4 992.5	4 166.5	392.3	6 477.8	184.1	1 830.6	15.3	<b>21 866.1</b>
September	3 621.9	4 538.0	4 241.3	357.4	8 111.0	260.0	1 430.2	7.5	<b>22 567.5</b>
December	3 142.3	4 246.7	4 387.7	721.4	9 393.0	162.3	1 020.6	65.6	<b>23 139.4</b>
<b>2006</b>									
March	2 691.5	4 058.5	5 320.1	666.8	8 297.7	224.2	635.8	57.8	<b>21 952.5</b>
June	2 908.1	3 423.7	5 265.2	791.0	11 192.2	210.5	413.6	70.0	<b>24 274.3</b>

^ estimate has a relative standard error of 10% to less than 25% and should be used with caution

	NSW	Vic.	Qld	SA	WA	Tas.	NT	ACT	Aust.
Period	%	%	%	%	%	%	%	%	%
.....									
VALUE OF WORK COMMENCED DURING PERIOD									
<b>2003–04</b>	-5.6	-6.2	7.1	-6.0	5.4	136.1	-45.4	19.6	<b>-2.3</b>
<b>2004–05</b>	9.7	90.8	58.3	39.4	82.5	-33.1	143.8	-12.2	<b>52.1</b>
<b>2005–06</b>	8.8	-31.4	21.3	11.2	79.6	72.7	-85.7	46.9	<b>13.7</b>
<b>2005</b>									
March	22.3	106.4	20.7	26.6	45.7	-28.8	-97.3	19.0	<b>19.4</b>
June	-5.0	-70.9	-7.9	-21.6	-56.6	-4.3	271.0	-4.5	<b>-38.8</b>
September	3.2	3.8	16.8	13.7	187.5	-10.9	-35.6	-13.7	<b>35.9</b>
December	-9.3	33.6	0.7	113.9	7.4	-11.2	-52.0	131.1	<b>8.7</b>
<b>2006</b>									
March	-10.3	-7.6	36.5	-52.6	-71.6	337.6	2.3	-31.3	<b>-21.3</b>
June	47.9	-16.7	-12.2	53.2	546.6	-28.5	40.7	15.8	<b>71.6</b>
.....									
VALUE OF WORK DONE DURING PERIOD									
<b>2003–04</b>	21.7	17.4	-0.3	-0.1	3.1	33.4	21.6	0.1	<b>10.8</b>
<b>2004–05</b>	18.4	18.6	27.9	11.4	26.3	22.8	6.9	1.0	<b>20.5</b>
<b>2005–06</b>	12.9	25.3	33.4	-7.0	77.3	43.3	6.9	9.0	<b>30.5</b>
<b>2005</b>									
March	-1.1	11.0	-4.4	-15.7	12.1	32.6	2.7	-16.0	<b>2.4</b>
June	29.8	9.1	13.3	25.8	-0.3	-2.9	26.4	35.7	<b>15.3</b>
September	-6.0	-7.1	10.8	-22.9	20.2	-20.0	-3.9	-17.8	<b>0.6</b>
December	1.9	28.0	4.3	15.5	34.2	43.1	-8.5	14.1	<b>14.3</b>
<b>2006</b>									
March	-14.1	-9.3	7.2	-16.5	-4.2	38.5	-5.7	26.0	<b>-5.0</b>
June	18.4	3.8	13.5	21.9	43.8	8.6	-10.1	-4.8	<b>19.5</b>
.....									
VALUE OF WORK YET TO BE DONE									
<b>2003–04</b>	19.5	-13.4	21.4	-47.0	17.4	1 043.1	-26.4	56.4	<b>6.8</b>
<b>2004–05</b>	-16.4	201.0	79.3	23.1	131.1	-44.7	34.6	-62.6	<b>63.3</b>
<b>2005–06</b>	-23.6	-31.4	26.4	101.6	72.8	14.3	-77.4	358.9	<b>11.0</b>
<b>2005</b>									
March	4.7	120.1	15.9	-3.4	30.1	-29.8	-17.8	134.7	<b>24.3</b>
June	-12.9	-3.0	1.3	-31.8	3.8	14.0	-16.0	-39.2	<b>-4.2</b>
September	-4.9	-9.1	1.8	-8.9	25.2	41.3	-21.9	-50.6	<b>3.2</b>
December	-13.2	-6.4	3.5	101.8	15.8	-37.6	-28.6	770.8	<b>2.5</b>
<b>2006</b>									
March	-14.3	-4.4	21.3	-7.6	-11.7	38.2	-37.7	-11.9	<b>-5.1</b>
June	8.0	-15.6	-1.0	18.6	34.9	-6.1	-34.9	21.1	<b>10.6</b>

	<i>Roads, highways and subdivisions</i>	<i>Bridges</i>	<i>Railways</i>	<i>Harbours</i>	<i>Water storage and supply</i>	<i>Sewerage and drainage</i>	<i>Electricity generation, transmission and distribution</i>	<i>Pipelines</i>	<i>Recreation</i>
<i>Period</i>	\$m	\$m	\$m	\$m	\$m	\$m	\$m	\$m	\$m
VALUE OF WORK COMMENCED DURING PERIOD									
<b>2003-04</b>	8 224.1	402.3	1 467.8	1 235.5	1 378.1	1 342.2	3 830.7	973.5	1 430.3
<b>2004-05</b>	12 088.4	369.6	1 747.1	481.9	1 304.8	1 244.9	5 750.7	840.9	1 904.1
<b>2005-06</b>	10 248.4	913.3	2 684.6	2 415.9	1 352.6	1 125.8	6 232.5	781.5	2 050.5
<b>2005</b>									
March	5 550.6	96.7	290.8	^ 145.1	^ 206.7	198.1	1 288.7	*181.1	^ 388.0
June	2 317.0	*144.2	524.1	187.8	382.4	274.8	912.0	*138.3	^ 470.4
September	2 312.5	*76.6	^ 347.6	141.9	452.1	^ 327.7	1 207.1	*139.0	513.9
December	2 545.0	^ 316.8	539.2	1 226.3	353.6	^ 271.9	1 116.0	410.2	^ 529.4
<b>2006</b>									
March	3 029.3	*200.9	289.5	161.9	^ 236.3	^ 277.8	1 217.2	132.2	^ 509.8
June	2 361.6	^ 319.1	1 508.3	885.8	^ 310.7	248.4	2 692.3	100.1	^ 497.3
VALUE OF WORK DONE DURING PERIOD									
<b>2003-04</b>	7 636.8	258.1	1 507.9	453.8	911.3	1 323.0	3 566.4	1 414.2	1 402.2
<b>2004-05</b>	9 459.9	382.4	2 232.9	925.0	1 226.8	1 124.3	4 614.9	702.4	1 656.6
<b>2005-06</b>	10 694.7	496.6	2 261.1	1 087.2	1 359.3	1 184.2	5 435.9	1 010.7	1 711.5
<b>2005</b>									
March	2 420.0	98.6	529.1	229.4	270.6	232.0	1 240.4	104.7	^ 395.8
June	2 737.8	107.2	685.1	237.5	357.0	282.6	1 207.6	174.6	421.6
September	2 654.8	86.4	597.1	265.4	312.7	245.1	1 276.5	190.3	^ 417.7
December	2 759.9	125.7	623.8	209.0	349.0	295.3	1 436.9	332.7	^ 440.2
<b>2006</b>									
March	2 525.0	^ 125.1	517.8	225.9	313.4	279.6	1 224.3	228.1	^ 407.2
June	2 755.1	159.3	522.3	387.0	384.2	364.3	1 498.1	259.6	446.4
VALUE OF WORK YET TO BE DONE DURING PERIOD									
<b>2003-04</b>	3 928.0	240.5	1 696.6	950.6	475.2	655.2	1 289.0	305.7	152.8
<b>2004-05</b>	6 218.6	218.7	1 605.9	543.7	456.2	427.1	2 381.5	775.4	153.6
<b>2005-06</b>	5 069.3	428.3	2 070.6	1 838.6	434.2	428.9	2 948.5	401.3	129.6
<b>2005</b>									
March	6 817.9	189.1	1 715.8	575.2	^ 435.2	467.9	2 507.1	325.6	^ 230.3
June	6 218.6	^ 218.7	1 605.9	543.7	456.2	427.1	2 381.5	^ 775.4	^ 153.6
September	5 720.6	152.9	1 342.3	478.6	553.8	431.5	2 309.1	^ 676.5	192.0
December	5 372.4	333.2	1 316.8	1 453.1	579.8	466.6	2 079.4	658.0	^ 200.5
<b>2006</b>									
March	5 638.1	345.1	1 136.3	1 373.9	486.3	566.4	1 804.5	569.6	^ 195.1
June	5 069.3	428.3	2 070.6	1 838.6	434.2	428.9	2 948.5	401.3	^ 129.6

^ estimate has a relative standard error of 10% to less than 25% and should be used with caution

\* estimate has a relative standard error of 25% to 50% and should be used with caution



	Telecom- munications	Oil, gas, coal and other minerals	Other heavy industry	Other	Total
Period	\$m	\$m	\$m	\$m	\$m

.....

VALUE OF WORK COMMENCED DURING PERIOD

<b>2003-04</b>	3 020.2	3 485.5	310.9	285.7	<b>27 386.5</b>
<b>2004-05</b>	3 420.7	11 105.8	1 025.0	371.3	<b>41 655.2</b>
<b>2005-06</b>	4 694.9	13 515.5	632.3	708.4	<b>47 356.2</b>
<b>2005</b>					
March	765.1	3 027.3	647.0	^ 110.0	<b>12 895.1</b>
June	1 042.0	1 337.9	*43.3	^ 124.0	<b>7 898.2</b>
September	933.9	4 006.0	100.2	^ 173.4	<b>10 731.8</b>
December	912.4	3 246.2	^ 46.2	*155.3	<b>11 668.4</b>
<b>2006</b>					
March	1 234.5	1 593.7	128.8	^ 175.8	<b>9 187.6</b>
June	1 614.1	4 669.6	357.1	^ 203.9	<b>15 768.3</b>

.....

VALUE OF WORK DONE DURING PERIOD

<b>2003-04</b>	2 995.7	5 385.1	293.6	258.9	<b>27 407.0</b>
<b>2004-05</b>	3 497.9	6 422.5	521.4	270.6	<b>33 037.4</b>
<b>2005-06</b>	4 705.7	11 769.9	818.4	593.2	<b>43 128.5</b>
<b>2005</b>					
March	813.7	1 701.7	117.9	^ 62.1	<b>8 216.0</b>
June	1 032.7	1 966.3	160.4	^ 103.7	<b>9 474.2</b>
September	966.7	2 192.6	155.7	^ 172.7	<b>9 533.7</b>
December	932.7	3 065.5	185.7	^ 136.4	<b>10 892.7</b>
<b>2006</b>					
March	1 173.3	2 991.5	198.1	^ 135.3	<b>10 344.6</b>
June	1 633.0	3 520.3	278.9	^ 148.9	<b>12 357.4</b>

.....

VALUE OF WORK YET TO BE DONE DURING PERIOD

<b>2003-04</b>	148.7	3 449.4	79.9	19.1	<b>13 390.6</b>
<b>2004-05</b>	151.3	8 153.9	693.5	86.8	<b>21 866.1</b>
<b>2005-06</b>	153.5	9 683.0	650.1	38.4	<b>24 274.3</b>
<b>2005</b>					
March	118.6	8 625.8	723.0	^ 84.0	<b>22 815.4</b>
June	151.3	8 153.9	693.5	^ 86.8	<b>21 866.1</b>
September	159.4	9 804.5	659.1	^ 87.1	<b>22 567.5</b>
December	148.7	9 924.5	583.4	*23.1	<b>23 139.4</b>
<b>2006</b>					
March	203.6	9 040.4	549.4	^ 43.8	<b>21 952.5</b>
June	153.5	9 683.0	650.1	^ 38.4	<b>24 274.3</b>

.....

^ estimate has a relative standard error of 10% to less than 25% and should be used with caution

\* estimate has a relative standard error of 25% to 50% and should be used with caution

## WORK COMMENCED BY THE PRIVATE SECTOR, By type: Original

	<i>Roads, highways and subdivisions</i>	<i>Bridges</i>	<i>Railways</i>	<i>Harbours</i>	<i>Water storage and supply</i>	<i>Sewerage and drainage</i>	<i>Electricity generation, transmission and distribution</i>	<i>Pipelines</i>	<i>Recreation</i>
<i>Period</i>	\$m	\$m	\$m	\$m	\$m	\$m	\$m	\$m	\$m
BY THE PRIVATE SECTOR FOR THE PRIVATE SECTOR									
<b>2003-04</b>	4 154.5	38.1	184.2	1 133.9	322.4	383.2	1 818.0	949.8	1 070.7
<b>2004-05</b>	6 387.8	63.0	319.0	356.2	399.5	247.6	2 321.6	826.1	1 487.6
<b>2005-06</b>	4 621.6	15.5	1 555.7	2 247.6	412.9	303.7	2 938.0	456.8	1 581.5
<b>2005</b>									
March	3 467.4	*9.4	45.1	^ 80.9	^ 70.8	^ 47.2	750.5	*179.6	^ 329.3
June	^ 1 011.1	*17.1	^ 55.1	159.0	^ 122.8	^ 73.3	314.3	**134.8	^ 404.4
September	^ 1 151.2	2.7	^ 70.7	101.9	*120.4	*84.8	379.4	*137.4	^ 369.0
December	^ 1 168.5	1.5	196.6	1 207.6	^ 134.8	^ 86.3	382.9	^ 93.2	^ 441.8
<b>2006</b>									
March	^ 1 275.8	6.0	^ 96.3	123.9	^ 65.2	^ 55.9	447.0	131.3	^ 390.7
June	^ 1 026.1	5.4	1 192.1	814.3	^ 92.5	^ 76.7	1 728.7	94.9	^ 380.1
BY THE PRIVATE SECTOR FOR THE PUBLIC SECTOR									
<b>2003-04</b>	2 107.6	258.0	807.3	60.3	597.1	527.3	256.8	2.1	206.2
<b>2004-05</b>	3 368.7	209.3	666.7	105.4	546.9	458.9	1 434.4	9.3	147.8
<b>2005-06</b>	3 252.1	796.8	440.1	154.2	574.9	326.5	456.3	2.0	189.1
<b>2005</b>									
March	1 627.7	70.8	^ 14.4	^ 58.7	^ 99.0	^ 63.2	^ 100.9	—	*22.6
June	751.3	*100.2	189.8	25.5	210.9	131.6	*57.6	^ 2.2	^ 28.6
September	415.3	*44.5	**106.3	37.6	^ 168.8	*64.5	*69.0	*0.6	^ 33.4
December	831.0	^ 292.1	170.7	^ 14.9	160.4	^ 93.6	140.0	*0.3	*41.0
<b>2006</b>									
March	1 215.5	*175.6	51.2	*33.6	^ 126.7	^ 118.0	106.9	—	*74.3
June	790.3	^ 284.7	111.9	68.1	119.0	^ 50.3	140.3	*1.1	^ 40.4
TOTAL BY THE PRIVATE SECTOR									
<b>2003-04</b>	6 262.1	296.1	991.5	1 194.2	919.6	910.5	2 074.8	951.9	1 276.8
<b>2004-05</b>	9 756.6	272.3	985.7	461.6	946.4	706.5	3 756.0	835.3	1 635.4
<b>2005-06</b>	7 873.7	812.3	1 995.9	2 401.8	987.8	630.2	3 394.2	458.8	1 770.6
<b>2005</b>									
March	5 095.1	80.2	59.4	^ 139.6	^ 169.8	110.4	851.4	*179.6	^ 351.9
June	1 762.4	*117.3	244.9	184.5	333.7	^ 204.9	371.9	**137.1	^ 433.0
September	1 566.5	*47.2	*177.0	139.5	^ 289.2	*149.3	448.4	*138.0	^ 402.5
December	1 999.5	^ 293.6	367.3	1 222.5	^ 295.2	^ 180.0	522.9	^ 93.5	^ 482.7
<b>2006</b>									
March	2 491.3	*181.5	147.5	157.5	^ 191.9	^ 173.8	553.9	131.3	^ 465.0
June	1 816.4	^ 290.1	1 304.0	882.3	211.5	^ 127.0	1 869.0	96.0	^ 420.5

^ estimate has a relative standard error of 10% to less than 25% and should be used with caution

\* estimate has a relative standard error of 25% to 50% and should be used with caution

\*\* estimate has a relative standard error greater than 50% and is considered too unreliable for general use

— nil or rounded to zero (including null cells)

	Telecom- munications	Oil, gas, coal and other minerals	Other heavy industry	Other	Total
Period	\$m	\$m	\$m	\$m	\$m

## BY THE PRIVATE SECTOR FOR THE PRIVATE SECTOR

<b>2003-04</b>	751.0	3 477.1	284.8	250.6	<b>14 818.2</b>
<b>2004-05</b>	924.9	11 082.5	1 024.0	305.1	<b>25 744.8</b>
<b>2005-06</b>	1 192.8	13 183.8	625.1	607.5	<b>29 742.6</b>
<b>2005</b>					
March	196.7	3 023.3	646.7	^ 93.6	<b>8 940.3</b>
June	^ 281.8	1 325.6	*42.7	*93.0	<b>4 034.9</b>
September	338.3	3 988.0	94.1	^ 160.3	<b>6 998.1</b>
December	273.4	3 116.5	^ 45.7	*146.0	<b>7 294.7</b>
<b>2006</b>					
March	371.5	1 482.4	128.2	*138.4	<b>4 712.7</b>
June	209.7	4 596.9	357.1	*162.8	<b>10 737.1</b>

## BY THE PRIVATE SECTOR FOR THE PUBLIC SECTOR

<b>2003-04</b>	70.1	4.2	23.7	29.3	<b>4 950.2</b>
<b>2004-05</b>	84.2	0.3	0.7	60.2	<b>7 092.9</b>
<b>2005-06</b>	34.3	111.9	0.9	93.2	<b>6 432.2</b>
<b>2005</b>					
March	24.4	—	—	*15.5	<b>2 097.2</b>
June	31.0	**0.1	*0.7	*29.6	<b>1 559.1</b>
September	12.3	—	*0.8	*11.2	<b>^ 964.4</b>
December	**6.1	108.4	—	*8.7	<b>1 867.2</b>
<b>2006</b>					
March	10.3	0.8	—	^ 36.2	<b>1 949.0</b>
June	^ 5.7	2.7	**0.1	37.1	<b>1 651.6</b>

## TOTAL BY THE PRIVATE SECTOR

<b>2003-04</b>	821.2	3 481.3	308.5	279.8	<b>19 768.4</b>
<b>2004-05</b>	1 009.1	11 082.8	1 024.6	365.3	<b>32 837.7</b>
<b>2005-06</b>	1 227.1	13 295.7	625.9	700.7	<b>36 174.8</b>
<b>2005</b>					
March	221.0	3 023.3	646.7	^ 109.1	<b>11 037.6</b>
June	312.7	1 325.7	*43.3	*122.6	<b>5 594.1</b>
September	350.6	3 988.0	94.9	^ 171.5	<b>7 962.5</b>
December	279.4	3 224.9	^ 45.7	*154.7	<b>9 162.0</b>
<b>2006</b>					
March	381.8	1 483.2	128.2	^ 174.7	<b>6 661.7</b>
June	215.3	4 599.6	357.1	^ 199.8	<b>12 388.7</b>

- ^ estimate has a relative standard error of 10% to less than 25% and should be used with caution  
 \* estimate has a relative standard error of 25% to 50% and should be used with caution  
 \*\* estimate has a relative standard error greater than 50% and is considered too unreliable for general use  
 — nil or rounded to zero (including null cells)

	<i>Roads, highways and subdivisions</i>	<i>Bridges</i>	<i>Railways</i>	<i>Harbours</i>	<i>Water storage and supply</i>	<i>Sewerage and drainage</i>	<i>Electricity generation, transmission and distribution</i>	<i>Pipelines</i>	<i>Recreation</i>
<i>Period</i>	\$m	\$m	\$m	\$m	\$m	\$m	\$m	\$m	\$m
BY THE PRIVATE SECTOR FOR THE PRIVATE SECTOR									
<b>2003-04</b>	3 942.4	42.9	270.6	285.4	292.8	478.8	1 471.5	1 384.8	1 026.6
<b>2004-05</b>	5 076.8	86.2	484.1	759.1	353.1	294.1	2 122.0	687.2	1 291.7
<b>2005-06</b>	5 555.8	16.7	510.7	946.4	444.4	319.2	1 977.2	895.5	1 287.3
<b>2005</b>									
March	1 322.8	*34.6	109.8	173.0	^ 76.3	^ 56.6	675.1	99.8	^ 315.3
June	1 379.1	^ 14.0	98.8	208.8	^ 109.7	^ 74.2	458.2	168.4	^ 322.7
September	1 551.6	3.6	134.5	222.1	^ 106.4	*78.0	522.4	187.7	^ 344.1
December	1 511.9	5.3	131.7	183.0	^ 119.5	^ 82.3	560.6	314.1	^ 341.8
<b>2006</b>									
March	1 187.0	2.5	121.9	191.2	^ 103.9	^ 73.3	428.4	183.1	^ 290.9
June	1 305.2	5.3	122.5	350.1	^ 114.5	^ 85.6	465.8	210.5	^ 310.4
BY THE PRIVATE SECTOR FOR THE PUBLIC SECTOR									
<b>2003-04</b>	1 749.3	123.1	651.4	121.9	347.4	559.9	272.9	8.7	213.9
<b>2004-05</b>	2 400.7	204.1	956.9	145.3	563.0	506.0	490.5	9.8	160.2
<b>2005-06</b>	2 901.6	391.1	1 020.8	127.8	592.1	408.5	711.2	4.3	172.3
<b>2005</b>									
March	618.7	39.8	248.2	^ 50.5	^ 120.6	100.7	122.8	*3.3	^ 35.2
June	698.4	^ 65.6	328.5	24.7	^ 162.5	^ 100.5	179.6	*5.0	^ 37.4
September	611.9	^ 62.2	268.4	41.5	^ 133.6	93.5	^ 181.0	^ 1.6	^ 27.7
December	690.3	95.2	304.4	23.4	^ 147.4	93.0	183.8	*0.3	*45.2
<b>2006</b>									
March	811.4	^ 107.4	221.8	^ 30.6	141.1	^ 107.0	128.7	—	^ 57.0
June	788.0	^ 126.3	226.2	^ 32.3	169.9	^ 115.1	217.6	*2.5	^ 42.4
TOTAL BY THE PRIVATE SECTOR									
<b>2003-04</b>	5 691.7	166.0	922.0	407.3	640.1	1 038.7	1 744.4	1 393.6	1 240.5
<b>2004-05</b>	7 477.5	290.3	1 441.0	904.4	916.1	800.2	2 612.5	697.0	1 452.0
<b>2005-06</b>	8 457.3	407.8	1 531.5	1 074.2	1 036.4	727.7	2 688.3	899.8	1 459.6
<b>2005</b>									
March	1 941.6	^ 74.4	358.0	223.5	^ 196.9	157.3	797.8	103.2	^ 350.5
June	2 077.6	^ 79.6	427.3	233.6	272.2	^ 174.6	637.8	173.4	^ 360.1
September	2 163.4	^ 65.7	402.9	263.6	^ 240.0	^ 171.5	703.4	189.3	^ 371.8
December	2 202.2	100.5	436.1	206.3	^ 266.9	175.2	744.4	314.4	^ 387.0
<b>2006</b>									
March	1 998.4	^ 110.0	343.8	221.8	245.0	180.3	557.1	183.1	^ 347.9
June	2 093.3	^ 131.6	348.7	382.5	284.4	200.7	683.4	213.0	^ 352.8

^ estimate has a relative standard error of 10% to less than 25% and should be used with caution

\* estimate has a relative standard error of 25% to 50% and should be used with caution

— nil or rounded to zero (including null cells)

	Telecom- munications	Oil, gas, coal and other minerals	Other heavy industry	Other	Total
Period	\$m	\$m	\$m	\$m	\$m

## BY THE PRIVATE SECTOR FOR THE PRIVATE SECTOR

<b>2003-04</b>	767.2	5 374.4	268.4	231.0	<b>15 837.1</b>
<b>2004-05</b>	924.8	6 399.2	518.8	217.1	<b>19 214.2</b>
<b>2005-06</b>	1 204.4	11 512.2	813.2	479.6	<b>25 962.4</b>
<b>2005</b>					
March	217.0	1 697.7	117.5	^ 49.5	<b>4 945.2</b>
June	^ 256.3	1 954.0	158.5	^ 82.8	<b>5 285.7</b>
September	359.7	2 174.6	151.3	^ 155.3	<b>5 991.2</b>
December	293.0	3 026.0	185.3	^ 114.3	<b>6 868.7</b>
<b>2006</b>					
March	334.6	2 875.8	197.7	^ 100.2	<b>6 090.6</b>
June	217.2	3 435.9	278.8	^ 109.9	<b>7 011.9</b>

## BY THE PRIVATE SECTOR FOR THE PUBLIC SECTOR

<b>2003-04</b>	44.4	3.9	22.8	21.6	<b>4 141.1</b>
<b>2004-05</b>	159.8	0.3	0.4	48.1	<b>5 645.2</b>
<b>2005-06</b>	57.8	37.8	1.1	101.4	<b>6 527.8</b>
<b>2005</b>					
March	52.4	—	—	*11.5	<b>1 403.8</b>
June	46.8	**0.1	*0.4	*19.4	<b>1 669.0</b>
September	23.6	—	*1.0	*14.8	<b>1 460.7</b>
December	^ 6.6	18.2	—	*18.3	<b>1 626.1</b>
<b>2006</b>					
March	11.5	5.2	—	^ 33.3	<b>1 655.1</b>
June	16.1	14.4	**0.1	34.9	<b>1 785.9</b>

## TOTAL BY THE PRIVATE SECTOR

<b>2003-04</b>	811.6	5 378.3	291.2	252.6	<b>19 978.1</b>
<b>2004-05</b>	1 084.5	6 399.5	519.2	265.2	<b>24 859.4</b>
<b>2005-06</b>	1 262.2	11 550.0	814.2	581.0	<b>32 490.1</b>
<b>2005</b>					
March	269.5	1 697.7	117.5	^ 61.0	<b>6 349.0</b>
June	^ 303.2	1 954.2	159.0	^ 102.3	<b>6 954.7</b>
September	383.2	2 174.6	152.3	^ 170.1	<b>7 451.9</b>
December	299.6	3 044.2	185.3	^ 132.6	<b>8 494.8</b>
<b>2006</b>					
March	346.1	2 880.9	197.7	^ 133.5	<b>7 745.7</b>
June	233.2	3 450.3	278.9	^ 144.8	<b>8 797.8</b>

^ estimate has a relative standard error of 10% to less than 25% and should be used with caution

\* estimate has a relative standard error of 25% to 50% and should be used with caution

\*\* estimate has a relative standard error greater than 50% and is considered too unreliable for general use

— nil or rounded to zero (including null cells)

	Roads, highways and subdivisions	Bridges	Railways	Harbours	Water storage and supply	Sewerage and drainage	Electricity generation, transmission and distribution
Period	\$m	\$m	\$m	\$m	\$m	\$m	\$m
BY THE PRIVATE SECTOR FOR THE PRIVATE SECTOR							
<b>2003-04</b>	2 795.8	25.8	300.7	891.7	52.9	58.6	1 028.3
<b>2004-05</b>	4 084.1	5.8	323.7	485.3	62.7	48.3	1 188.4
<b>2005-06</b>	2 469.6	8.5	1 279.2	1 783.3	35.9	23.0	2 098.2
<b>2005</b>							
March	4 531.6	^ 4.6	338.3	509.2	^ 51.8	^ 28.1	1 165.2
June	4 084.1	5.8	323.7	485.3	62.7	*48.3	1 188.4
September	3 495.8	6.6	258.0	406.7	^ 96.0	26.0	928.5
December	3 065.3	4.0	314.0	1 420.0	^ 106.5	^ 44.2	853.4
<b>2006</b>							
March	2 886.4	8.3	255.3	1 339.1	^ 62.3	^ 26.4	852.2
June	2 469.6	8.5	1 279.2	1 783.3	35.9	^ 23.0	2 098.2
BY THE PRIVATE SECTOR FOR THE PUBLIC SECTOR							
<b>2003-04</b>	911.0	178.9	1 239.3	58.2	379.5	349.3	161.2
<b>2004-05</b>	1 830.6	194.9	1 098.8	57.1	243.4	253.0	1 093.1
<b>2005-06</b>	2 071.6	390.4	646.4	50.0	198.2	177.1	574.7
<b>2005</b>							
March	1 881.8	164.4	1 206.6	^ 65.0	^ 220.4	216.1	1 229.2
June	1 830.6	^ 194.9	1 098.8	57.1	243.4	253.0	1 093.1
September	1 573.7	118.7	931.4	69.0	278.0	199.4	998.2
December	1 750.2	^ 309.2	858.5	27.5	284.9	202.7	952.5
<b>2006</b>							
March	2 141.9	313.7	765.3	*28.4	267.3	262.4	682.7
June	2 071.6	390.4	646.4	50.0	198.2	^ 177.1	574.7
TOTAL BY THE PRIVATE SECTOR							
<b>2003-04</b>	3 706.7	204.7	1 540.0	949.9	432.4	407.9	1 189.5
<b>2004-05</b>	5 914.8	200.6	1 422.5	542.4	306.1	301.3	2 281.4
<b>2005-06</b>	4 541.2	399.0	1 925.6	1 833.3	234.1	200.0	2 672.9
<b>2005</b>							
March	6 413.4	169.0	1 544.9	574.2	^ 272.2	244.3	2 394.4
June	5 914.8	^ 200.6	1 422.5	542.4	306.1	301.3	2 281.4
September	5 069.5	125.4	1 189.4	475.8	374.0	225.4	1 926.7
December	4 815.5	313.2	1 172.5	1 447.4	391.4	246.9	1 805.9
<b>2006</b>							
March	5 028.3	322.0	1 020.7	1 367.5	329.6	288.8	1 534.9
June	4 541.2	399.0	1 925.6	1 833.3	234.1	^ 200.0	2 672.9
^ estimate has a relative standard error of 10% to less than 25% and should be used with caution                * estimate has a relative standard error of 25% to 50% and should be used with caution							

	Pipelines	Recreation	Telecom- munications	Oil, gas, coal and other minerals	Other heavy industry	Other	Total
Period	\$m	\$m	\$m	\$m	\$m	\$m	\$m

## BY THE PRIVATE SECTOR FOR THE PRIVATE SECTOR

<b>2003-04</b>	305.4	71.4	19.1	3 447.0	79.9	15.5	<b>9 092.1</b>
<b>2004-05</b>	773.2	72.2	73.1	8 153.9	691.8	76.8	<b>16 039.4</b>
<b>2005-06</b>	186.4	69.9	138.6	9 608.4	650.1	33.4	<b>18 384.5</b>
<b>2005</b>							
March	321.5	117.7	25.2	8 625.8	722.2	^ 75.2	<b>16 516.4</b>
June	^ 773.2	^ 72.2	73.1	8 153.9	691.8	^ 76.8	<b>16 039.4</b>
September	^ 675.7	^ 69.8	136.2	9 804.5	656.4	^ 53.2	<b>16 613.4</b>
December	357.3	*90.6	126.9	9 833.7	583.1	*17.0	<b>16 816.0</b>
<b>2006</b>							
March	312.9	*95.6	151.2	8 954.5	548.9	*39.9	<b>15 533.1</b>
June	186.4	^ 69.9	138.6	9 608.4	650.1	^ 33.4	<b>18 384.5</b>

## BY THE PRIVATE SECTOR FOR THE PUBLIC SECTOR

<b>2003-04</b>	0.1	30.9	128.7	2.4	—	2.4	<b>3 441.8</b>
<b>2004-05</b>	1.8	9.9	76.8	—	0.2	9.8	<b>4 869.4</b>
<b>2005-06</b>	1.4	6.1	12.9	74.3	—	5.0	<b>4 208.0</b>
<b>2005</b>							
March	3.7	**17.3	92.7	—	—	*8.5	<b>5 105.6</b>
June	*1.8	*9.9	76.8	—	*0.2	**9.8	<b>4 869.4</b>
September	^ 0.5	^ 17.0	22.5	**—	—	^ 19.1	<b>4 227.5</b>
December	*0.5	*17.7	^ 21.0	90.2	—	*4.6	<b>4 519.5</b>
<b>2006</b>							
March	**0.6	*30.8	^ 25.9	85.8	—	^ 3.7	<b>4 608.6</b>
June	1.4	6.1	^ 12.9	74.3	—	5.0	<b>4 208.0</b>

## TOTAL BY THE PRIVATE SECTOR

<b>2003-04</b>	305.5	102.3	147.8	3 449.4	79.9	17.9	<b>12 533.9</b>
<b>2004-05</b>	775.1	82.1	149.9	8 153.9	692.0	86.6	<b>20 908.8</b>
<b>2005-06</b>	187.7	76.0	151.5	9 682.7	650.1	38.4	<b>22 592.5</b>
<b>2005</b>							
March	325.2	^ 135.0	117.9	8 625.8	722.2	^ 83.7	<b>21 622.0</b>
June	^ 775.1	^ 82.1	149.9	8 153.9	692.0	^ 86.6	<b>20 908.8</b>
September	^ 676.1	86.8	158.7	9 804.5	656.4	^ 72.2	<b>20 840.9</b>
December	357.8	^ 108.3	147.9	9 923.9	583.1	*21.7	<b>21 335.5</b>
<b>2006</b>							
March	313.4	*126.5	177.1	9 040.4	548.9	^ 43.6	<b>20 141.7</b>
June	187.7	^ 76.0	151.5	9 682.7	650.1	^ 38.4	<b>22 592.5</b>

^ estimate has a relative standard error of 10% to less than 25% and should be used with caution

\* estimate has a relative standard error of 25% to 50% and should be used with caution

\*\* estimate has a relative standard error greater than 50% and is considered too unreliable for general use

— nil or rounded to zero (including null cells)

	<i>Roads, highways and subdivisions</i>	<i>Bridges</i>	<i>Railways</i>	<i>Harbours</i>	<i>Water storage and supply</i>	<i>Sewerage and drainage</i>	<i>Electricity generation, transmission and distribution</i>	<i>Pipelines</i>
<i>Period</i>	\$m	\$m	\$m	\$m	\$m	\$m	\$m	\$m
VALUE OF WORK COMMENCED DURING PERIOD								
<b>2003-04</b>	1 962.0	106.2	476.2	41.3	458.5	431.7	1 756.0	21.6
<b>2004-05</b>	2 331.8	97.2	761.4	20.3	358.4	538.4	1 994.7	5.6
<b>2005-06</b>	2 374.7	101.0	688.7	14.0	364.8	495.6	2 838.3	322.7
<b>2005</b>								
March	455.5	16.5	231.4	5.5	^ 36.9	^ 87.7	437.3	1.5
June	554.6	26.9	279.2	^ 3.3	^ 48.7	^ 69.9	540.1	1.2
September	746.0	29.4	170.6	2.4	^ 162.9	178.3	758.7	1.0
December	545.5	23.2	171.9	3.8	58.4	^ 91.9	593.1	316.7
<b>2006</b>								
March	538.1	19.4	141.9	4.4	^ 44.3	^ 103.9	663.3	0.9
June	545.2	^ 29.0	204.3	3.5	*99.2	^ 121.4	823.3	4.1
VALUE OF WORK DONE DURING PERIOD								
<b>2003-04</b>	1 945.1	92.1	585.9	46.5	271.1	284.3	1 822.0	20.6
<b>2004-05</b>	1 982.4	92.1	791.9	20.6	310.7	324.1	2 002.4	5.3
<b>2005-06</b>	2 237.4	88.8	729.6	13.0	322.9	456.5	2 747.5	110.9
<b>2005</b>								
March	478.5	24.2	171.1	5.9	^ 73.7	^ 74.7	442.6	1.6
June	660.2	27.6	257.9	3.9	^ 84.8	107.9	569.8	1.2
September	491.4	20.7	194.2	1.8	72.7	73.5	573.1	1.1
December	557.7	25.2	187.7	2.6	82.0	^ 120.0	692.5	18.3
<b>2006</b>								
March	526.5	15.2	174.1	4.1	^ 68.4	99.3	667.3	44.9
June	661.8	^ 27.7	173.6	4.5	99.8	163.6	814.7	46.6
VALUE OF WORK YET TO BE DONE								
<b>2003-04</b>	221.2	35.7	156.7	0.8	42.8	247.3	99.5	0.1
<b>2004-05</b>	303.9	18.1	183.3	1.3	150.1	125.7	100.1	0.4
<b>2005-06</b>	528.1	29.3	145.0	5.3	200.1	228.8	275.6	213.6
<b>2005</b>								
March	404.5	^ 20.1	170.9	^ 1.1	^ 163.0	^ 223.6	112.6	0.4
June	303.9	^ 18.1	183.3	1.3	^ 150.1	125.7	100.1	0.4
September	^ 651.1	27.5	152.9	2.9	^ 179.8	206.2	382.4	0.4
December	556.9	20.1	144.3	5.7	188.4	219.7	273.5	300.2
<b>2006</b>								
March	609.8	23.1	115.6	6.4	156.7	^ 277.6	269.5	256.2
June	528.1	29.3	145.0	5.3	^ 200.1	^ 228.8	275.6	213.6

^ estimate has a relative standard error of 10% to less than 25% and should be used with caution

\* estimate has a relative standard error of 25% to 50% and should be used with caution



	Recreation	Telecom- munications	Oil, gas, coal and other minerals	Other heavy industry	Other	<b>Total</b>
Period	\$m	\$m	\$m	\$m	\$m	\$m
VALUE OF WORK COMMENCED DURING PERIOD						
<b>2003-04</b>	153.4	2 199.0	4.1	2.4	5.9	<b>7 618.1</b>
<b>2004-05</b>	268.7	2 411.6	23.0	0.4	6.0	<b>8 817.5</b>
<b>2005-06</b>	279.9	3 467.8	219.8	6.3	7.7	<b>11 181.3</b>
<b>2005</b>						
March	36.1	544.0	4.0	^ 0.2	0.9	<b>1 857.5</b>
June	37.4	729.2	12.2	—	^ 1.4	<b>2 304.2</b>
September	111.4	583.4	18.0	* 5.3	1.9	<b>2 769.3</b>
December	46.7	632.9	21.3	0.6	0.6	<b>2 506.5</b>
<b>2006</b>						
March	^ 44.9	852.7	110.5	** 0.5	1.1	<b>2 526.0</b>
June	^ 76.8	1 398.8	69.9	—	* 4.1	<b>3 379.6</b>
VALUE OF WORK DONE DURING PERIOD						
<b>2003-04</b>	161.7	2 184.1	6.8	2.4	6.3	<b>7 428.8</b>
<b>2004-05</b>	204.6	2 413.3	23.0	2.1	5.4	<b>8 178.0</b>
<b>2005-06</b>	251.9	3 443.5	219.9	4.2	12.2	<b>10 638.3</b>
<b>2005</b>						
March	45.3	544.3	4.0	^ 0.4	1.0	<b>1 867.0</b>
June	61.6	729.6	12.2	1.4	^ 1.4	<b>2 519.5</b>
September	45.9	583.4	18.0	** 3.4	2.6	<b>2 081.9</b>
December	53.2	633.0	21.4	0.4	3.7	<b>2 398.0</b>
<b>2006</b>						
March	59.3	827.2	110.5	* 0.4	1.8	<b>2 598.9</b>
June	^ 93.6	1 399.8	70.0	—	* 4.1	<b>3 559.6</b>
VALUE OF WORK YET TO BE DONE						
<b>2003-04</b>	50.5	0.9	—	—	1.2	<b>856.7</b>
<b>2004-05</b>	71.5	1.3	—	1.5	0.2	<b>957.3</b>
<b>2005-06</b>	53.6	2.0	0.3	—	0.1	<b>1 681.8</b>
<b>2005</b>						
March	* 95.3	0.7	—	0.8	0.3	<b>1 193.4</b>
June	* 71.5	* 1.3	—	1.5	0.2	<b>957.3</b>
September	105.2	0.7	—	2.7	14.8	<b>1 726.6</b>
December	92.1	0.7	0.6	0.3	1.4	<b>1 803.9</b>
<b>2006</b>						
March	68.7	26.5	—	* 0.5	0.2	<b>1 810.8</b>
June	53.6	2.0	0.3	—	* 0.1	<b>1 681.8</b>

^ estimate has a relative standard error of 10% to less than 25% and should be used with caution

\* estimate has a relative standard error of 25% to 50% and should be used with caution

\*\* estimate has a relative standard error greater than 50% and is considered too unreliable for general use

— nil or rounded to zero (including null cells)

	<i>Roads, highways and subdivisions</i>	<i>Bridges</i>	<i>Railways</i>	<i>Harbours</i>	<i>Water storage and supply</i>	<i>Sewerage and drainage</i>	<i>Electricity generation, transmission and distribution</i>	<i>Pipelines</i>
<i>Period</i>	\$m	\$m	\$m	\$m	\$m	\$m	\$m	\$m
VALUE OF WORK COMMENCED DURING PERIOD								
<b>2003-04</b>	4 069.6	364.2	1 283.6	101.6	1 055.6	959.0	2 012.7	23.7
<b>2004-05</b>	5 700.6	306.6	1 428.1	125.7	905.3	997.3	3 429.1	14.8
<b>2005-06</b>	5 626.9	897.8	1 128.8	168.2	939.7	822.1	3 294.6	324.7
<b>2005</b>								
March	2 083.2	87.3	245.7	^ 64.3	^ 135.9	^ 150.9	538.2	1.6
June	1 305.9	*127.1	469.0	28.8	259.6	201.5	597.7	^ 3.4
September	1 161.3	*73.9	*276.9	40.0	331.7	242.9	827.7	^ 1.6
December	1 376.5	^ 315.3	342.6	^ 18.7	218.8	^ 185.6	733.1	317.0
<b>2006</b>								
March	1 753.5	*194.9	193.2	*38.0	^ 171.0	^ 221.9	770.2	0.9
June	1 335.6	^ 313.7	316.2	71.6	^ 218.2	^ 171.7	963.6	5.2
VALUE OF WORK DONE DURING PERIOD								
<b>2003-04</b>	3 694.4	215.1	1 237.3	168.3	618.5	844.2	2 094.8	29.4
<b>2004-05</b>	4 383.1	296.2	1 748.8	165.9	873.6	830.2	2 492.9	15.2
<b>2005-06</b>	5 139.0	479.9	1 750.4	140.8	915.0	865.0	3 458.7	115.2
<b>2005</b>								
March	1 097.2	64.0	419.2	^ 56.4	194.3	175.4	565.3	*4.9
June	1 358.6	93.2	586.3	28.6	247.3	208.4	749.4	*6.3
September	1 103.3	82.9	462.6	43.3	206.3	167.0	754.1	2.6
December	1 248.0	120.4	492.1	26.0	229.5	213.0	876.3	18.6
<b>2006</b>								
March	1 337.9	^ 122.6	395.9	34.7	209.5	206.3	795.9	44.9
June	1 449.8	154.0	399.8	^ 36.9	269.7	278.6	1 032.3	49.1
VALUE OF WORK YET TO BE DONE								
<b>2003-04</b>	1 132.2	214.6	1 395.9	59.0	422.3	596.6	260.7	0.2
<b>2004-05</b>	2 134.5	212.9	1 282.2	58.4	393.5	378.7	1 193.1	2.2
<b>2005-06</b>	2 599.7	419.7	791.4	55.3	398.3	405.9	850.2	215.0
<b>2005</b>								
March	2 286.3	184.5	1 377.5	^ 66.0	^ 383.4	439.8	1 341.8	4.1
June	2 134.5	^ 212.9	1 282.2	58.4	393.5	378.7	1 193.1	*2.2
September	2 224.8	146.3	1 084.3	71.9	457.8	405.5	1 380.6	^ 0.8
December	2 307.1	329.3	1 002.8	33.2	473.3	422.4	1 226.0	300.7
<b>2006</b>								
March	2 751.7	336.8	881.0	*34.8	424.0	540.0	952.2	256.7
June	2 599.7	419.7	791.4	55.3	398.3	405.9	850.2	215.0

^ estimate has a relative standard error of 10% to less than 25% and should be used with caution

\* estimate has a relative standard error of 25% to 50% and should be used with caution

	Recreation	Telecom- munications	Oil, gas, coal and other minerals	Other heavy industry	Other	Total
Period	\$m	\$m	\$m	\$m	\$m	\$m
VALUE OF WORK COMMENCED DURING PERIOD						
<b>2003-04</b>	359.6	2 269.1	8.4	26.1	35.2	<b>12 568.3</b>
<b>2004-05</b>	416.5	2 495.8	23.3	1.1	66.2	<b>15 910.4</b>
<b>2005-06</b>	469.0	3 502.1	331.7	7.2	100.9	<b>17 613.5</b>
<b>2005</b>						
March	^ 58.7	568.4	4.0	^ 0.2	*16.4	<b>3 954.8</b>
June	^ 66.0	760.2	12.3	*0.7	*31.0	<b>3 863.3</b>
September	144.9	595.6	18.0	*6.0	*13.1	<b>3 733.7</b>
December	^ 87.7	639.0	129.7	0.6	*9.3	<b>4 373.7</b>
<b>2006</b>						
March	^ 119.2	863.0	111.3	**0.5	^ 37.4	<b>4 475.0</b>
June	^ 117.2	1 404.4	72.6	**0.1	41.1	<b>5 031.2</b>
VALUE OF WORK DONE DURING PERIOD						
<b>2003-04</b>	375.5	2 228.5	10.7	25.2	27.9	<b>11 569.9</b>
<b>2004-05</b>	364.9	2 573.1	23.3	2.6	53.5	<b>13 823.2</b>
<b>2005-06</b>	424.3	3 501.3	257.7	5.2	113.6	<b>17 166.1</b>
<b>2005</b>						
March	^ 80.4	596.7	4.0	^ 0.4	*12.6	<b>3 270.8</b>
June	98.9	776.4	12.3	^ 1.9	*20.8	<b>4 188.5</b>
September	73.6	607.0	18.0	*4.4	^ 17.4	<b>3 542.6</b>
December	^ 98.4	639.7	39.6	0.4	*22.1	<b>4 024.1</b>
<b>2006</b>						
March	^ 116.3	838.8	115.7	*0.4	^ 35.1	<b>4 254.0</b>
June	136.0	1 415.8	84.4	**0.1	^ 39.0	<b>5 345.5</b>
VALUE OF WORK YET TO BE DONE						
<b>2003-04</b>	81.4	129.6	2.4	—	3.5	<b>4 298.5</b>
<b>2004-05</b>	81.4	78.1	—	1.7	10.0	<b>5 826.7</b>
<b>2005-06</b>	59.7	14.9	74.6	—	5.1	<b>5 889.8</b>
<b>2005</b>						
March	*112.6	93.4	—	0.8	*8.8	<b>6 298.9</b>
June	*81.4	78.1	—	1.7	**10.0	<b>5 826.7</b>
September	122.2	23.2	**—	2.7	^ 33.9	<b>5 954.1</b>
December	109.9	^ 21.8	90.8	0.3	*6.0	<b>6 323.4</b>
<b>2006</b>						
March	^ 99.5	52.3	85.8	*0.5	^ 3.9	<b>6 419.4</b>
June	59.7	^ 14.9	74.6	—	5.1	<b>5 889.8</b>

^ estimate has a relative standard error of 10% to less than 25% and should be used with caution

\* estimate has a relative standard error of 25% to 50% and should be used with caution

\*\* estimate has a relative standard error greater than 50% and is considered too unreliable for general use

— nil or rounded to zero (including null cells)

<i>Period</i>	<i>Roads, highways and subdivisions</i>	<i>Bridges, railways and harbours</i>	<i>Electricity generation, transmission etc. and pipelines</i>	<i>Water storage and supply, sewerage and drainage</i>	<i>Telecom- munications</i>	<i>Heavy industry</i>	<i>Recreation and other</i>	<i>Total</i>
\$m	\$m	\$m	\$m	\$m	\$m	\$m	\$m	\$m
VALUE OF WORK COMMENCED DURING PERIOD								
<b>2003-04</b>	3 572.1	634.4	1 120.3	953.0	1 064.0	579.5	539.7	<b>8 463.0</b>
<b>2004-05</b>	3 673.0	1 045.8	1 166.6	808.7	1 224.9	764.5	599.5	<b>9 283.0</b>
<b>2005-06</b>	2 754.3	1 589.0	1 913.1	911.0	1 633.4	607.8	687.9	<b>10 096.4</b>
<b>2005</b>								
March	1 539.2	231.6	247.4	^ 105.4	276.4	^ 88.3	^ 136.0	<b>2 624.4</b>
June	^ 810.7	441.5	303.0	220.2	369.1	166.7	^ 183.4	<b>2 494.5</b>
September	^ 723.7	^ 343.7	584.4	282.2	350.4	^ 101.3	^ 187.6	<b>2 573.1</b>
December	^ 709.5	381.0	300.2	^ 221.5	309.2	251.3	* 160.0	<b>2 332.8</b>
<b>2006</b>								
March	^ 715.7	229.7	253.2	^ 176.2	450.8	102.2	* 165.5	<b>2 093.5</b>
June	^ 605.3	634.5	775.4	^ 231.0	523.0	153.0	^ 174.8	<b>3 097.1</b>
VALUE OF WORK DONE DURING PERIOD								
<b>2003-04</b>	2 989.8	914.8	1 212.4	744.2	1 073.3	463.1	490.7	<b>7 888.2</b>
<b>2004-05</b>	3 766.0	1 187.7	1 147.4	754.2	1 263.5	682.0	539.6	<b>9 340.4</b>
<b>2005-06</b>	3 947.2	1 253.2	1 565.9	927.1	1 647.4	668.6	533.4	<b>10 542.8</b>
<b>2005</b>								
March	873.7	280.8	258.7	177.2	292.2	170.4	^ 145.6	<b>2 198.6</b>
June	1 151.5	399.0	314.3	^ 216.3	383.0	222.5	^ 166.5	<b>2 853.1</b>
September	1 126.6	340.5	382.3	193.6	368.6	123.9	^ 146.4	<b>2 681.8</b>
December	1 128.8	332.1	406.1	223.0	330.2	192.2	^ 121.3	<b>2 733.7</b>
<b>2006</b>								
March	830.9	277.8	356.2	202.1	411.9	149.0	^ 119.3	<b>2 347.3</b>
June	860.8	302.8	421.3	308.4	536.7	203.5	^ 146.4	<b>2 779.9</b>
VALUE OF WORK YET TO BE DONE								
<b>2003-04</b>	2 807.2	595.5	96.3	564.1	24.1	409.6	56.0	<b>4 552.7</b>
<b>2004-05</b>	2 491.5	477.2	110.5	377.4	28.4	270.5	51.5	<b>3 807.1</b>
<b>2005-06</b>	929.1	682.8	544.7	355.3	103.8	252.8	39.5	<b>2 908.1</b>
<b>2005</b>								
March	2 910.1	447.0	^ 126.0	^ 470.0	23.3	324.7	^ 70.0	<b>4 371.1</b>
June	2 491.5	477.2	^ 110.5	377.4	28.4	270.5	^ 51.5	<b>3 807.1</b>
September	2 004.8	^ 433.5	354.8	403.9	77.3	^ 270.6	^ 76.8	<b>3 621.9</b>
December	1 532.8	477.9	267.8	400.1	75.9	^ 329.6	^ 58.2	<b>3 142.3</b>
<b>2006</b>								
March	1 225.7	431.5	199.6	421.2	118.9	246.2	^ 48.5	<b>2 691.5</b>
June	929.1	682.8	544.7	^ 355.3	103.8	252.8	^ 39.5	<b>2 908.1</b>

^ estimate has a relative standard error of 10% to less than 25% and should be used with caution

\* estimate has a relative standard error of 25% to 50% and should be used with caution

	<i>Roads, highways and subdivisions</i>	<i>Bridges, railways and harbours</i>	<i>Electricity generation, transmission etc. and pipelines</i>	<i>Water storage and supply, sewerage and drainage</i>	<i>Telecom- munications</i>	<i>Heavy industry</i>	<i>Recreation and other</i>	<b>Total</b>
<i>Period</i>	\$m	\$m	\$m	\$m	\$m	\$m	\$m	\$m
<b>VALUE OF WORK COMMENCED DURING PERIOD</b>								
<b>2003-04</b>	1 259.2	419.3	1 171.9	326.5	769.0	312.5	324.6	<b>4 583.0</b>
<b>2004-05</b>	4 299.5	134.8	1 345.0	299.4	815.0	1 358.8	492.0	<b>8 744.5</b>
<b>2005-06</b>	2 328.0	279.1	728.5	348.2	1 098.2	443.8	769.5	<b>5 995.3</b>
<b>2005</b>								
March	3 032.8	^ 34.6	504.5	^ 66.2	182.2	387.0	^ 112.4	<b>4 319.7</b>
June	^ 518.2	^ 25.7	241.5	^ 62.4	234.2	*46.7	^ 127.3	<b>1 256.0</b>
September	^ 306.2	28.6	198.0	*85.0	219.0	322.8	^ 143.8	<b>1 303.4</b>
December	781.0	*122.6	224.3	^ 106.5	225.9	*29.6	^ 252.0	<b>1 741.8</b>
<b>2006</b>								
March	^ 717.9	*96.3	166.7	^ 69.9	279.7	43.9	^ 234.8	<b>1 609.2</b>
June	^ 523.0	*31.6	139.5	^ 86.7	373.7	*47.6	^ 138.9	<b>1 340.9</b>
<b>VALUE OF WORK DONE DURING PERIOD</b>								
<b>2003-04</b>	1 285.1	483.7	1 090.1	370.6	731.5	698.0	324.3	<b>4 983.3</b>
<b>2004-05</b>	1 871.8	626.0	1 195.2	354.2	857.1	589.7	417.4	<b>5 911.3</b>
<b>2005-06</b>	2 591.0	427.9	1 040.8	377.0	1 102.9	1 280.2	586.2	<b>7 405.9</b>
<b>2005</b>								
March	566.3	144.2	346.7	^ 68.1	196.7	163.2	^ 86.7	<b>1 571.8</b>
June	589.6	191.0	302.4	^ 101.5	236.2	181.6	^ 112.6	<b>1 714.8</b>
September	473.9	120.4	342.6	^ 80.2	227.6	223.5	^ 125.3	<b>1 593.6</b>
December	630.3	128.9	299.9	^ 110.6	229.3	460.8	^ 180.6	<b>2 040.4</b>
<b>2006</b>								
March	711.7	89.5	202.3	^ 84.9	275.3	331.7	^ 155.1	<b>1 850.6</b>
June	775.0	89.1	196.0	^ 101.3	370.7	264.2	^ 125.1	<b>1 921.4</b>
<b>VALUE OF WORK YET TO BE DONE</b>								
<b>2003-04</b>	291.7	512.1	549.3	78.2	57.7	157.3	12.2	<b>1 658.7</b>
<b>2004-05</b>	2 770.3	278.3	817.7	133.5	35.0	946.9	10.9	<b>4 992.5</b>
<b>2005-06</b>	2 330.1	169.9	390.6	171.9	17.2	315.9	28.2	<b>3 423.7</b>
<b>2005</b>								
March	2 808.8	401.5	657.9	112.2	36.8	1 100.6	*27.3	<b>5 145.0</b>
June	2 770.3	278.3	817.7	133.5	35.0	946.9	^ 10.9	<b>4 992.5</b>
September	2 554.5	194.2	560.6	114.2	27.9	1 070.3	*16.3	<b>4 538.0</b>
December	2 687.1	^ 218.3	495.0	143.9	^ 22.5	619.4	*60.4	<b>4 246.7</b>
<b>2006</b>								
March	2 623.6	^ 257.8	457.5	138.1	*29.5	469.9	*82.2	<b>4 058.5</b>
June	2 330.1	169.9	390.6	171.9	^ 17.2	315.9	*28.2	<b>3 423.7</b>

^ estimate has a relative standard error of 10% to less than 25% and should be used with caution

\* estimate has a relative standard error of 25% to 50% and should be used with caution

<i>Period</i>	<i>Roads, highways and subdivisions</i>	<i>Bridges, railways and harbours</i>	<i>Electricity generation, transmission etc. and pipelines</i>	<i>Water storage and supply, sewerage and drainage</i>	<i>Telecom- munications</i>	<i>Heavy industry</i>	<i>Recreation and other</i>	<i>Total</i>
\$m	\$m	\$m	\$m	\$m	\$m	\$m	\$m	\$m
VALUE OF WORK COMMENCED DURING PERIOD								
<b>2003-04</b>	1 730.6	359.9	794.8	971.4	528.1	1 117.0	455.6	<b>5 957.5</b>
<b>2004-05</b>	2 332.9	544.1	2 099.9	761.2	636.3	2 419.1	639.3	<b>9 432.8</b>
<b>2005-06</b>	3 046.6	587.0	2 026.6	627.0	912.7	3 471.8	772.1	<b>11 443.7</b>
<b>2005</b>								
March	^ 539.6	187.7	255.7	^ 132.4	145.6	^ 946.6	^ 111.6	<b>2 319.1</b>
June	525.9	^ 200.7	311.0	^ 112.3	195.4	618.6	^ 171.7	<b>2 135.5</b>
September	743.1	*85.2	371.5	^ 205.1	168.0	703.3	^ 217.6	<b>2 493.8</b>
December	^ 530.9	146.6	701.3	^ 168.3	178.0	616.2	^ 170.5	<b>2 511.7</b>
<b>2006</b>								
March	1 021.5	^ 143.4	514.8	^ 144.3	222.5	1 227.2	^ 154.4	<b>3 428.1</b>
June	751.2	^ 211.8	439.0	^ 109.2	344.1	925.1	^ 229.6	<b>3 010.1</b>
VALUE OF WORK DONE								
<b>2003-04</b>	1 722.0	319.2	845.8	549.7	527.0	1 105.0	471.3	<b>5 539.9</b>
<b>2004-05</b>	2 023.3	500.8	1 266.6	684.1	650.3	1 491.8	466.8	<b>7 083.7</b>
<b>2005-06</b>	2 218.1	526.3	1 891.2	607.6	914.9	2 592.5	699.5	<b>9 450.0</b>
<b>2005</b>								
March	520.9	131.1	305.2	^ 160.4	154.6	^ 331.2	^ 94.7	<b>1 698.2</b>
June	455.0	122.9	367.5	152.4	200.2	507.5	^ 118.8	<b>1 924.3</b>
September	594.2	133.5	404.9	^ 132.2	173.4	500.6	^ 193.9	<b>2 132.7</b>
December	529.5	114.5	458.2	^ 176.1	175.6	604.9	^ 166.1	<b>2 225.0</b>
<b>2006</b>								
March	513.2	130.7	461.1	^ 143.0	222.9	767.4	^ 146.6	<b>2 385.0</b>
June	581.2	^ 147.5	567.0	156.2	343.0	719.6	^ 192.8	<b>2 707.4</b>
VALUE OF WORK YET TO BE DONE								
<b>2003-04</b>	451.7	341.1	180.6	373.0	21.3	895.7	59.8	<b>2 323.3</b>
<b>2004-05</b>	611.7	389.0	997.1	177.5	16.8	1 852.9	121.5	<b>4 166.5</b>
<b>2005-06</b>	1 355.5	255.5	847.6	174.8	6.8	2 568.7	56.2	<b>5 265.2</b>
<b>2005</b>								
March	^ 687.7	307.9	1 055.0	^ 228.9	20.7	^ 1 665.8	^ 148.3	<b>4 114.3</b>
June	^ 611.7	389.0	997.1	^ 177.5	16.8	1 852.9	*121.5	<b>4 166.5</b>
September	^ 739.1	282.7	968.2	217.8	1.9	1 920.4	111.1	<b>4 241.3</b>
December	^ 721.7	260.6	1 211.5	252.4	2.4	1 893.8	45.3	<b>4 387.7</b>
<b>2006</b>								
March	1 284.3	252.5	1 003.8	286.8	4.8	2 441.2	^ 46.7	<b>5 320.1</b>
June	1 355.5	255.5	847.6	174.8	6.8	2 568.7	^ 56.2	<b>5 265.2</b>

^ estimate has a relative standard error of 10% to less than 25% and should be used with caution

\* estimate has a relative standard error of 25% to 50% and should be used with caution

	Roads, highways and subdivisions	Bridges, railways and harbours	Electricity generation, transmission etc. and pipelines	Water storage and supply, sewerage and drainage	Telecom- munications	Heavy industry	Recreation and other	Total
Period	\$m	\$m	\$m	\$m	\$m	\$m	\$m	\$m
VALUE OF WORK COMMENCED DURING PERIOD								
<b>2003-04</b>	371.2	30.5	258.3	100.8	151.2	433.8	150.6	<b>1 496.5</b>
<b>2004-05</b>	531.7	58.8	721.2	138.6	224.3	253.6	157.2	<b>2 085.3</b>
<b>2005-06</b>	430.2	194.2	638.8	146.7	260.1	516.6	132.2	<b>2 318.8</b>
<b>2005</b>								
March	^ 160.3	^ 18.9	71.8	* 26.7	59.0	78.8	* 40.1	<b>455.7</b>
June	142.6	31.0	46.7	^ 19.6	61.7	23.3	^ 32.2	<b>357.2</b>
September	102.4	33.9	65.8	67.6	53.8	50.4	^ 32.4	<b>406.2</b>
December	114.1	140.1	191.2	** 33.3	49.2	311.9	^ 29.2	<b>869.0</b>
<b>2006</b>								
March	115.9	** 8.3	56.2	^ 21.1	71.4	100.3	^ 38.9	<b>412.1</b>
June	97.8	11.8	325.7	^ 24.7	85.6	53.9	^ 31.7	<b>631.3</b>
VALUE OF WORK DONE DURING PERIOD								
<b>2003-04</b>	369.1	38.5	350.6	145.7	152.0	581.4	127.4	<b>1 764.7</b>
<b>2004-05</b>	518.7	43.7	620.9	99.6	218.6	333.4	130.1	<b>1 965.1</b>
<b>2005-06</b>	434.4	139.5	417.6	126.9	258.1	320.1	131.4	<b>1 827.9</b>
<b>2005</b>								
March	146.4	^ 7.3	131.7	^ 20.4	53.4	47.6	* 32.2	<b>439.1</b>
June	170.4	18.6	175.2	32.8	61.5	66.4	^ 27.5	<b>552.4</b>
September	107.8	35.2	119.4	^ 28.6	51.5	^ 58.6	^ 24.6	<b>425.7</b>
December	110.6	43.5	137.0	* 36.6	50.6	77.9	^ 35.3	<b>491.6</b>
<b>2006</b>								
March	108.2	^ 31.1	63.4	^ 24.4	64.9	81.0	^ 37.3	<b>410.3</b>
June	107.8	29.7	97.8	37.3	91.0	102.6	^ 34.2	<b>500.3</b>
VALUE OF WORK YET TO BE DONE								
<b>2003-04</b>	69.9	11.3	103.3	38.7	0.1	81.4	13.9	<b>318.7</b>
<b>2004-05</b>	64.0	33.7	198.0	24.1	7.4	55.9	9.3	<b>392.3</b>
<b>2005-06</b>	39.1	86.0	419.4	32.9	6.5	199.7	7.5	<b>791.0</b>
<b>2005</b>								
March	^ 101.2	* 27.2	328.0	* 41.6	7.3	63.5	* 6.1	<b>574.9</b>
June	* 64.0	^ 33.7	198.0	^ 24.1	7.4	55.9	9.3	<b>392.3</b>
September	^ 51.1	^ 39.3	156.3	^ 58.9	9.7	^ 30.4	* 11.8	<b>357.4</b>
December	53.5	132.4	214.8	^ 50.0	8.3	257.0	5.3	<b>721.4</b>
<b>2006</b>								
March	^ 46.8	104.2	191.5	39.9	14.9	258.6	^ 10.9	<b>666.8</b>
June	^ 39.1	86.0	419.4	32.9	6.5	199.7	7.5	<b>791.0</b>

^ estimate has a relative standard error of 10% to less than 25% and should be used with caution

\* estimate has a relative standard error of 25% to 50% and should be used with caution

\*\* estimate has a relative standard error greater than 50% and is considered too unreliable for general use

	<i>Roads, highways and subdivisions</i>	<i>Bridges, railways and harbours</i>	<i>Electricity generation, transmission etc. and pipelines</i>	<i>Water storage and supply, sewerage and drainage</i>	<i>Telecom- munications</i>	<i>Heavy industry</i>	<i>Recreation and other</i>	<b>Total</b>
<i>Period</i>	\$m	\$m	\$m	\$m	\$m	\$m	\$m	\$m
<b>VALUE OF WORK COMMENCED DURING PERIOD</b>								
<b>2003-04</b>	985.6	1 619.7	256.4	234.4	333.6	1 252.3	189.3	<b>4 871.2</b>
<b>2004-05</b>	927.2	681.6	1 036.1	432.3	347.0	5 143.6	321.5	<b>8 889.5</b>
<b>2005-06</b>	1 332.3	3 321.1	1 192.7	298.3	519.1	8 983.1	317.9	<b>15 964.5</b>
<b>2005</b>								
March	^ 201.2	^ 47.1	^ 341.8	*56.4	64.0	2 148.7	*84.1	<b>2 943.4</b>
June	221.6	48.2	**93.4	^ 212.1	130.1	509.0	*62.8	<b>1 277.3</b>
September	^ 374.9	67.8	**98.6	*107.6	92.6	2 845.0	^ 85.4	<b>3 671.9</b>
December	282.7	1 280.7	^ 86.1	66.2	97.3	2 077.3	^ 53.3	<b>3 943.7</b>
<b>2006</b>								
March	369.7	160.4	80.1	*73.5	134.9	230.7	^ 69.0	<b>1 118.3</b>
June	305.0	1 812.2	927.9	^ 51.0	194.3	3 830.1	*110.2	<b>7 230.6</b>
<b>VALUE OF WORK DONE DURING PERIOD</b>								
<b>2003-04</b>	1 004.3	371.3	683.9	302.6	334.3	1 989.7	194.5	<b>4 880.6</b>
<b>2004-05</b>	976.3	1 142.5	597.9	343.8	323.1	2 462.4	316.3	<b>6 162.3</b>
<b>2005-06</b>	1 197.1	1 419.4	990.3	383.5	515.1	6 146.6	276.0	<b>10 928.0</b>
<b>2005</b>								
March	^ 244.9	286.0	192.7	^ 61.1	72.6	720.3	*86.1	<b>1 663.7</b>
June	273.1	287.2	^ 141.0	^ 97.1	98.4	679.6	^ 82.8	<b>1 659.3</b>
September	^ 281.7	305.6	149.2	*93.9	94.9	984.0	^ 85.4	<b>1 994.7</b>
December	279.1	316.2	354.5	^ 75.4	94.2	1 509.7	^ 48.4	<b>2 677.5</b>
<b>2006</b>								
March	275.5	316.1	212.6	^ 103.7	128.3	1 468.4	^ 61.5	<b>2 566.1</b>
June	360.9	481.6	274.0	110.5	197.6	2 184.5	^ 80.7	<b>3 689.7</b>
<b>VALUE OF WORK YET TO BE DONE</b>								
<b>2003-04</b>	235.5	1 413.0	163.1	59.3	26.4	878.0	27.7	<b>2 803.1</b>
<b>2004-05</b>	223.1	1 080.0	939.7	161.1	51.9	3 979.1	42.9	<b>6 477.8</b>
<b>2005-06</b>	326.8	3 079.3	983.3	96.6	17.8	6 657.5	30.9	<b>11 192.2</b>
<b>2005</b>								
March	245.9	1 284.0	^ 563.9	*33.1	15.7	4 047.0	^ 54.1	<b>6 243.7</b>
June	223.1	1 080.0	^ 939.7	161.1	51.9	3 979.1	^ 42.9	<b>6 477.8</b>
September	329.4	924.9	^ 792.7	^ 170.5	42.4	5 799.1	^ 52.0	<b>8 111.0</b>
December	287.6	1 924.4	494.3	171.5	39.5	6 430.5	^ 45.2	<b>9 393.0</b>
<b>2006</b>								
March	379.0	1 728.1	344.1	^ 154.1	29.4	5 623.9	39.0	<b>8 297.7</b>
June	326.8	3 079.3	983.3	^ 96.6	17.8	6 657.5	^ 30.9	<b>11 192.2</b>

^ estimate has a relative standard error of 10% to less than 25% and should be used with caution

\* estimate has a relative standard error of 25% to 50% and should be used with caution

\*\* estimate has a relative standard error greater than 50% and is considered too unreliable for general use



	<i>Roads, highways and subdivisions</i>	<i>Bridges, railways and harbours</i>	<i>Electricity generation, transmission etc. and pipelines</i>	<i>Water storage and supply, sewerage and drainage</i>	<i>Telecom- munications</i>	<i>Heavy industry</i>	<i>Recreation and other</i>	<i>Total</i>
<i>Period</i>	\$m	\$m	\$m	\$m	\$m	\$m	\$m	\$m
VALUE OF WORK COMMENCED DURING PERIOD								
<b>2003-04</b>	111.9	14.1	474.4	51.2	34.0	11.0	25.1	<b>721.7</b>
<b>2004-05</b>	156.7	11.9	153.5	40.5	42.0	43.7	34.9	<b>483.1</b>
<b>2005-06</b>	144.9	17.6	431.7	100.3	72.7	36.5	30.9	<b>834.5</b>
<b>2005</b>								
March	42.4	^ 3.7	^ 36.4	^ 8.0	8.7	**9.0	^ 6.1	<b>^ 114.4</b>
June	^ 31.6	*3.7	40.1	*10.5	12.6	**2.9	^ 8.2	<b>109.5</b>
September	^ 28.8	*1.9	^ 16.2	*19.9	10.1	*9.4	^ 11.3	<b>^ 97.6</b>
December	31.9	^ 4.7	^ 11.7	*18.1	12.1	**3.8	^ 4.3	<b>86.6</b>
<b>2006</b>								
March	54.8	5.5	263.7	^ 18.9	18.3	*8.7	^ 9.4	<b>379.1</b>
June	29.5	5.4	140.2	^ 43.4	32.1	*14.6	*5.9	<b>271.2</b>
VALUE OF WORK DONE DURING PERIOD								
<b>2003-04</b>	108.7	14.2	244.7	48.8	33.8	10.3	24.9	<b>485.5</b>
<b>2004-05</b>	139.0	12.4	313.1	37.3	42.0	24.6	27.8	<b>596.2</b>
<b>2005-06</b>	154.4	14.3	471.9	74.7	71.5	35.4	31.9	<b>854.1</b>
<b>2005</b>								
March	^ 45.3	^ 2.4	92.7	^ 7.1	8.7	*5.6	^ 5.7	<b>167.5</b>
June	^ 46.3	^ 4.5	64.9	*15.6	12.6	**10.9	^ 7.9	<b>162.7</b>
September	^ 30.4	2.3	56.0	*16.7	10.1	*9.5	^ 5.1	<b>130.1</b>
December	38.4	^ 3.0	101.8	^ 14.4	12.1	**7.3	^ 9.2	<b>186.2</b>
<b>2006</b>								
March	50.9	5.8	143.6	^ 20.5	17.2	**9.2	^ 10.7	<b>257.8</b>
June	34.6	^ 3.2	170.5	^ 23.1	32.1	**9.5	^ 6.9	<b>280.0</b>
VALUE OF WORK YET TO BE DONE								
<b>2003-04</b>	7.3	2.1	316.6	5.0	0.5	0.4	0.9	<b>332.8</b>
<b>2004-05</b>	24.2	2.8	87.5	7.0	—	60.9	1.6	<b>184.1</b>
<b>2005-06</b>	18.0	4.1	146.6	29.4	—	9.0	3.3	<b>210.5</b>
<b>2005</b>								
March	*39.2	^ 4.0	83.4	^ 10.8	—	^ 22.0	*2.1	<b>161.5</b>
June	^ 24.2	2.8	87.5	*7.0	—	60.9	*1.6	<b>184.1</b>
September	22.8	^ 1.9	148.4	*17.7	—	60.8	^ 8.5	<b>260.0</b>
December	^ 20.5	^ 3.2	50.5	*22.9	—	58.3	^ 6.9	<b>162.3</b>
<b>2006</b>								
March	24.0	^ 3.0	172.3	12.1	1.1	*6.0	^ 5.8	<b>224.2</b>
June	18.0	4.1	146.6	29.4	—	*9.0	*3.3	<b>210.5</b>

^ estimate has a relative standard error of 10% to less than 25% and should be used with caution

\*\* estimate has a relative standard error greater than 50% and is considered too unreliable for general use

\* estimate has a relative standard error of 25% to 50% and should be used with caution

— nil or rounded to zero (including null cells)

	<i>Roads, highways and subdivisions</i>	<i>Bridges, railways and harbours</i>	<i>Electricity generation, transmission etc. and pipelines</i>	<i>Water storage and supply, sewerage and drainage</i>	<i>Telecom- munications</i>	<i>Heavy industry</i>	<i>Recreation and other</i>	<b>Total</b>
<i>Period</i>	\$m	\$m	\$m	\$m	\$m	\$m	\$m	\$m
<b>VALUE OF WORK COMMENCED DURING PERIOD</b>								
<b>2003-04</b>	96.6	27.3	699.1	23.7	78.3	89.4	11.8	<b>1 026.2</b>
<b>2004-05</b>	111.0	118.0	28.5	31.2	53.3	2 147.4	12.8	<b>2 502.1</b>
<b>2005-06</b>	87.7	11.3	41.3	21.6	86.6	86.8	22.7	<b>358.0</b>
<b>2005</b>								
March	13.0	*5.8	3.4	3.7	10.6	**15.7	^ 4.2	^ <b>56.3</b>
June	^ 54.7	105.2	4.3	**10.3	15.8	*14.2	*4.5	<b>209.0</b>
September	25.5	1.8	3.4	**8.2	16.5	73.9	**5.3	<b>134.5</b>
December	^ 23.1	**2.8	3.1	*6.5	17.1	^ 1.5	**10.6	^ <b>64.6</b>
<b>2006</b>								
March	^ 21.4	**4.7	4.7	*0.9	23.4	*9.3	*1.7	<b>66.0</b>
June	^ 17.7	*2.1	30.1	**6.1	29.7	2.2	*5.1	<b>92.9</b>
<b>VALUE OF WORK DONE DURING PERIOD</b>								
<b>2003-04</b>	72.7	77.6	524.1	23.7	81.6	830.8	9.3	<b>1 619.8</b>
<b>2004-05</b>	101.3	25.6	137.4	30.3	64.9	1 359.6	12.0	<b>1 731.1</b>
<b>2005-06</b>	95.6	51.2	30.1	21.0	85.2	1 543.6	23.4	<b>1 850.1</b>
<b>2005</b>								
March	11.2	5.0	^ 9.6	^ 2.0	16.5	381.1	*2.8	<b>428.3</b>
June	^ 34.4	^ 5.6	*7.0	**13.9	17.8	458.2	*4.6	<b>541.4</b>
September	^ 29.0	8.8	4.5	**7.8	16.5	448.1	*5.9	<b>520.5</b>
December	^ 26.7	^ 16.9	3.5	*3.6	17.1	397.6	**10.9	<b>476.2</b>
<b>2006</b>								
March	^ 19.9	^ 14.5	3.7	**4.7	21.5	382.7	*2.2	<b>449.3</b>
June	20.0	^ 11.0	18.5	**4.9	30.1	315.2	*4.4	<b>404.1</b>
<b>VALUE OF WORK YET TO BE DONE</b>								
<b>2003-04</b>	33.8	12.4	185.4	2.7	18.5	1 106.8	0.7	<b>1 360.5</b>
<b>2004-05</b>	24.4	105.4	5.1	1.7	11.1	1 681.2	1.6	<b>1 830.6</b>
<b>2005-06</b>	4.4	59.8	15.7	2.1	1.4	329.4	0.9	<b>413.6</b>
<b>2005</b>								
March	8.4	*5.6	^ 17.1	^ 5.3	13.1	2 125.1	**5.1	<b>2 179.7</b>
June	^ 24.4	105.4	^ 5.1	*1.7	11.1	1 681.2	*1.6	<b>1 830.6</b>
September	16.7	94.8	3.7	**1.7	—	1 311.9	1.4	<b>1 430.2</b>
December	8.8	83.0	3.4	**4.9	—	919.3	^ 1.2	<b>1 020.6</b>
<b>2006</b>								
March	7.5	77.7	^ 4.5	^ 0.5	1.9	543.3	*0.4	<b>635.8</b>
June	4.4	59.8	15.7	*2.1	1.4	329.4	*0.9	<b>413.6</b>

^ estimate has a relative standard error of 10% to less than 25% and should be used with caution

\* estimate has a relative standard error of 25% to 50% and should be used with caution

\*\* estimate has a relative standard error greater than 50% and is considered too unreliable for general use

— nil or rounded to zero (including null cells)

<i>Period</i>	<i>Roads, highways and subdivisions</i>	<i>Bridges, railways and harbours</i>	<i>Electricity generation, transmission etc. and pipelines</i>	<i>Water storage and supply, sewerage and drainage</i>	<i>Telecom- munications</i>	<i>Heavy industry</i>	<i>Recreation and other</i>	<i>Total</i>
<i>\$m</i>	<i>\$m</i>	<i>\$m</i>	<i>\$m</i>	<i>\$m</i>	<i>\$m</i>	<i>\$m</i>	<i>\$m</i>	<i>\$m</i>
VALUE OF WORK COMMENCED DURING PERIOD								
<b>2003-04</b>	96.9	0.3	28.9	59.1	62.0	0.8	19.3	<b>267.4</b>
<b>2004-05</b>	56.3	3.5	40.7	37.8	77.9	0.2	18.4	<b>234.8</b>
<b>2005-06</b>	124.4	14.5	41.3	25.4	112.2	1.5	25.6	<b>344.9</b>
<b>2005</b>								
March	22.1	3.1	8.7	5.9	18.6	0.1	*3.6	<b>62.1</b>
June	11.6	0.1	10.4	9.7	23.1	—	*4.4	<b>59.3</b>
September	7.9	3.1	8.3	4.2	23.7	0.1	*4.0	<b>51.2</b>
December	71.9	3.7	8.4	5.0	23.5	0.9	*4.8	<b>118.3</b>
<b>2006</b>								
March	12.4	3.9	10.1	*9.2	33.4	0.3	**11.9	<b>81.3</b>
June	32.2	3.8	14.5	7.0	31.6	0.2	*4.9	<b>94.2</b>
VALUE OF WORK DONE DURING PERIOD								
<b>2003-04</b>	85.0	0.4	29.0	48.9	62.4	0.5	18.7	<b>244.9</b>
<b>2004-05</b>	63.5	1.5	38.8	47.7	78.3	0.2	17.3	<b>247.3</b>
<b>2005-06</b>	57.0	13.1	38.8	25.8	110.7	1.2	23.0	<b>269.6</b>
<b>2005</b>								
March	11.2	0.2	7.9	6.3	19.1	0.1	*4.1	<b>48.8</b>
June	17.4	1.1	10.0	10.1	23.0	—	*4.6	<b>66.3</b>
September	11.1	2.6	8.1	4.7	24.1	0.1	*3.8	<b>54.5</b>
December	16.5	3.4	8.5	4.6	23.6	0.9	*4.8	<b>62.2</b>
<b>2006</b>								
March	14.5	3.4	9.5	*9.6	31.4	0.1	**9.8	<b>78.3</b>
June	14.9	3.7	12.7	6.9	31.6	0.1	*4.6	<b>74.6</b>
VALUE OF WORK YET TO BE DONE								
<b>2003-04</b>	30.7	0.1	—	9.5	—	—	0.5	<b>40.8</b>
<b>2004-05</b>	9.4	1.9	1.4	0.9	0.6	—	1.1	<b>15.3</b>
<b>2005-06</b>	66.4	—	1.8	0.2	—	0.1	1.5	<b>70.0</b>
<b>2005</b>								
March	16.6	2.9	1.3	1.1	1.7	0.1	1.3	<b>25.1</b>
June	9.4	1.9	1.4	0.9	0.6	—	1.1	<b>15.3</b>
September	2.1	2.5	0.9	^ 0.5	0.2	—	1.2	<b>7.5</b>
December	60.5	3.3	—	0.7	0.1	—	1.1	<b>65.6</b>
<b>2006</b>								
March	47.1	0.5	0.8	—	3.1	0.6	*5.6	<b>57.8</b>
June	66.4	—	1.8	0.2	—	0.1	**1.5	<b>70.0</b>

^ estimate has a relative standard error of 10% to less than 25% and should be used with caution

\*\* estimate has a relative standard error greater than 50% and is considered too unreliable for general use

\* estimate has a relative standard error of 25% to 50% and should be used with caution

— nil or rounded to zero (including null cells)

## VALUE OF WORK DONE BY THE PRIVATE SECTOR, States and territories: Original

	NSW	Vic.	Qld	SA	WA	Tas.	NT	ACT	Aust.
Period	\$m	\$m	\$m	\$m	\$m	\$m	\$m	\$m	\$m
BY THE PRIVATE SECTOR FOR THE PRIVATE SECTOR									
<b>2003-04</b>	3 026.6	3 369.3	2 755.7	1 195.9	3 782.3	164.5	1 429.3	113.5	<b>15 837.1</b>
<b>2004-05</b>	4 063.4	3 957.9	3 410.0	1 138.8	4 719.2	271.8	1 542.2	111.0	<b>19 214.2</b>
<b>2005-06</b>	4 212.4	5 247.9	4 546.7	870.8	9 017.0	287.3	1 658.6	121.7	<b>25 962.4</b>
<b>2005</b>									
March	988.6	1 075.6	836.8	245.8	1 298.5	78.0	397.2	24.7	<b>4 945.2</b>
June	1 217.0	1 122.8	886.5	242.0	1 243.2	^ 69.3	477.3	27.7	<b>5 285.7</b>
September	1 260.8	1 223.4	1 121.6	226.7	1 605.0	^ 52.2	470.8	30.7	<b>5 991.2</b>
December	1 200.5	1 555.3	1 109.6	226.9	2 239.5	71.5	435.6	29.8	<b>6 868.7</b>
<b>2006</b>									
March	868.7	1 275.3	1 131.9	194.1	2 086.2	84.8	413.3	^ 36.3	<b>6 090.6</b>
June	882.5	1 193.9	1 183.5	223.0	3 086.3	78.8	338.9	25.0	<b>7 011.9</b>
BY THE PRIVATE SECTOR FOR THE PUBLIC SECTOR									
<b>2003-04</b>	1 572.7	940.7	612.0	231.6	473.5	90.7	124.9	95.0	<b>4 141.1</b>
<b>2004-05</b>	1 767.9	1 202.0	1 151.1	383.8	777.8	132.7	136.8	93.2	<b>5 645.2</b>
<b>2005-06</b>	2 336.5	1 127.6	1 267.2	459.2	1 002.4	136.1	109.1	89.8	<b>6 527.8</b>
<b>2005</b>									
March	418.0	^ 316.8	^ 305.1	80.1	203.5	^ 44.4	^ 21.4	14.5	<b>1 403.8</b>
June	527.2	357.4	304.8	158.9	210.2	^ 37.3	^ 48.1	25.2	<b>1 669.0</b>
September	565.9	212.9	311.0	73.6	224.3	^ 24.2	^ 35.4	13.4	<b>1 460.7</b>
December	587.7	280.5	271.7	154.2	255.1	31.6	^ 23.5	21.7	<b>1 626.1</b>
<b>2006</b>									
March	570.7	330.0	301.8	102.8	254.7	48.7	^ 17.8	^ 28.6	<b>1 655.1</b>
June	612.2	304.2	382.7	128.5	268.2	31.6	^ 32.3	26.2	<b>1 785.9</b>
TOTAL BY THE PRIVATE SECTOR									
<b>2003-04</b>	4 599.3	4 310.0	3 367.7	1 427.5	4 255.8	255.2	1 554.1	208.5	<b>19 978.1</b>
<b>2004-05</b>	5 831.3	5 159.8	4 561.0	1 522.6	5 497.0	404.5	1 679.0	204.2	<b>24 859.4</b>
<b>2005-06</b>	6 548.9	6 375.5	5 813.8	1 329.9	10 019.4	423.3	1 767.7	211.6	<b>32 490.1</b>
<b>2005</b>									
March	1 406.6	1 392.4	1 141.9	325.9	1 502.0	122.4	418.6	39.2	<b>6 349.0</b>
June	1 744.2	1 480.1	1 191.3	400.9	1 453.4	^ 106.5	525.4	52.9	<b>6 954.7</b>
September	1 826.7	1 436.3	1 432.6	300.4	1 829.4	76.3	506.2	44.1	<b>7 451.9</b>
December	1 788.1	1 835.8	1 381.3	381.2	2 494.6	103.1	459.2	51.5	<b>8 494.8</b>
<b>2006</b>									
March	1 439.4	1 605.3	1 433.7	296.9	2 341.0	133.5	431.2	64.8	<b>7 745.7</b>
June	1 494.7	1 498.1	1 566.3	351.5	3 354.5	110.4	371.2	51.2	<b>8 797.8</b>

^ estimate has a relative standard error of 10% to less than 25% and should be used with caution

	NSW	Vic.	Qld	SA	WA	Tas.	NT	ACT	Aust.
Period	\$m	\$m	\$m	\$m	\$m	\$m	\$m	\$m	\$m
TOTAL BY COMMONWEALTH GOVERNMENT									
<b>2003-04</b>	692.9	539.9	436.5	105.9	263.9	33.1	62.0	36.4	<b>2 170.7</b>
<b>2004-05</b>	818.9	551.3	500.6	169.1	240.9	41.0	44.9	43.1	<b>2 409.9</b>
<b>2005-06</b>	1 094.4	743.3	781.6	184.5	434.9	68.0	72.0	58.1	<b>3 436.8</b>
<b>2005</b>									
March	182.9	125.7	114.2	39.7	54.9	8.7	8.2	9.6	<b>544.0</b>
June	253.8	159.5	151.0	49.0	76.1	12.5	13.5	13.4	<b>728.9</b>
September	197.7	117.0	128.2	32.7	73.7	10.1	13.1	10.4	<b>583.0</b>
December	203.0	139.1	146.0	32.6	75.5	12.0	13.9	10.7	<b>632.9</b>
<b>2006</b>									
March	257.0	181.0	188.3	44.1	108.2	16.2	17.1	13.5	<b>825.4</b>
June	436.7	306.1	319.1	75.1	177.5	29.7	27.9	23.4	<b>1 395.5</b>
TOTAL BY STATE AND TERRITORY GOVERNMENT									
<b>2003-04</b>	2 086.5	21.7	995.1	128.5	125.4	135.6	—	—	<b>3 492.8</b>
<b>2004-05</b>	2 042.3	70.2	1 295.9	175.8	154.4	86.3	—	—	<b>3 824.8</b>
<b>2005-06</b>	2 179.6	113.9	1 936.4	195.3	144.1	291.0	—	—	<b>4 860.4</b>
<b>2005</b>									
March	449.4	18.5	272.4	46.8	31.9	20.3	—	—	<b>839.3</b>
June	651.6	33.9	385.7	68.9	46.1	23.5	—	—	<b>1 209.6</b>
September	521.8	17.8	391.6	^ 73.2	34.1	25.8	—	—	<b>1 064.3</b>
December	568.8	25.7	453.4	^ 46.6	33.3	50.9	—	—	<b>1 178.6</b>
<b>2006</b>									
March	492.7	23.8	537.3	42.3	33.8	91.1	—	—	<b>1 221.0</b>
June	596.3	46.6	554.1	33.3	43.0	123.1	—	—	<b>1 396.4</b>
BY LOCAL GOVERNMENT AUTHORITIES									
<b>2003-04</b>	509.4	111.6	740.7	102.8	235.5	61.6	3.6	—	<b>1 765.3</b>
<b>2004-05</b>	648.0	130.0	726.2	97.6	270.0	64.4	7.2	—	<b>1 943.3</b>
<b>2005-06</b>	719.8	173.2	918.1	118.2	329.6	71.8	10.5	—	<b>2 341.2</b>
<b>2005</b>									
March	^ 159.6	^ 35.3	169.6	^ 26.6	^ 74.9	16.1	1.6	—	<b>483.7</b>
June	203.6	^ 41.3	196.3	^ 33.6	^ 83.7	^ 20.1	^ 2.5	—	<b>581.0</b>
September	135.6	22.4	^ 180.3	^ 19.4	^ 57.6	^ 17.9	1.3	—	<b>434.5</b>
December	173.8	^ 39.7	^ 244.2	^ 31.3	74.1	^ 20.2	3.1	—	<b>586.4</b>
<b>2006</b>									
March	158.3	^ 40.4	225.7	^ 27.0	83.1	17.0	1.1	—	<b>552.6</b>
June	252.2	70.6	^ 267.9	^ 40.5	114.7	16.8	5.0	—	<b>767.6</b>
TOTAL BY THE PUBLIC SECTOR									
<b>2003-04</b>	3 288.9	673.3	2 172.2	337.3	624.8	230.3	65.6	36.4	<b>7 428.8</b>
<b>2004-05</b>	3 509.1	751.5	2 522.7	442.5	665.3	191.7	52.1	43.1	<b>8 178.0</b>
<b>2005-06</b>	3 993.8	1 030.4	3 636.2	498.0	908.6	430.8	82.4	58.1	<b>10 638.3</b>
<b>2005</b>									
March	792.0	179.4	556.3	113.2	161.7	45.1	9.8	9.6	<b>1 867.0</b>
June	1 108.9	234.7	733.0	151.5	205.9	56.1	16.0	13.4	<b>2 519.5</b>
September	855.1	157.3	700.2	125.3	165.4	53.8	14.4	10.4	<b>2 081.9</b>
December	945.6	204.6	843.6	110.5	182.9	83.1	17.0	10.7	<b>2 398.0</b>
<b>2006</b>									
March	908.0	245.3	951.3	113.3	225.1	124.3	18.1	13.5	<b>2 598.9</b>
June	1 285.2	423.3	1 141.1	148.9	335.2	169.6	32.9	23.4	<b>3 559.6</b>

^ estimate has a relative standard error of 10% to less than 25% and should be used with caution

— nil or rounded to zero (including null cells)

(a) Includes construction work done by public sector organisations with their own workforce only. All work contracted out by public sector organisations to the private sector appears in 'By private for public sector' totals.

VALUE OF WORK DONE FOR THE PUBLIC SECTOR(a), States and territories: **Original**

<i>Period</i>	<i>NSW</i> \$m	<i>Vic.</i> \$m	<i>Qld</i> \$m	<i>SA</i> \$m	<i>WA</i> \$m	<i>Tas.</i> \$m	<i>NT</i> \$m	<i>ACT</i> \$m	<i>Aust.</i> \$m
BY THE PRIVATE SECTOR FOR THE PUBLIC SECTOR									
<b>2003-04</b>	1 572.7	940.7	612.0	231.6	473.5	90.7	124.9	95.0	<b>4 141.1</b>
<b>2004-05</b>	1 767.9	1 202.0	1 151.1	383.8	777.8	132.7	136.8	93.2	<b>5 645.2</b>
<b>2005-06</b>	2 336.5	1 127.6	1 267.2	459.2	1 002.4	136.1	109.1	89.8	<b>6 527.8</b>
<b>2005</b>									
March	418.0	^ 316.8	^ 305.1	80.1	203.5	^ 44.4	^ 21.4	14.5	<b>1 403.8</b>
June	527.2	357.4	304.8	158.9	210.2	^ 37.3	^ 48.1	25.2	<b>1 669.0</b>
September	565.9	212.9	311.0	73.6	224.3	^ 24.2	^ 35.4	13.4	<b>1 460.7</b>
December	587.7	280.5	271.7	154.2	255.1	31.6	^ 23.5	21.7	<b>1 626.1</b>
<b>2006</b>									
March	570.7	330.0	301.8	102.8	254.7	48.7	^ 17.8	^ 28.6	<b>1 655.1</b>
June	612.2	304.2	382.7	128.5	268.2	31.6	^ 32.3	26.2	<b>1 785.9</b>
TOTAL BY THE PUBLIC SECTOR									
<b>2003-04</b>	3 288.9	673.3	2 172.2	337.3	624.8	230.3	65.6	36.4	<b>7 428.8</b>
<b>2004-05</b>	3 509.1	751.5	2 522.7	442.5	665.3	191.7	52.1	43.1	<b>8 178.0</b>
<b>2005-06</b>	3 993.8	1 030.4	3 636.2	498.0	908.6	430.8	82.4	58.1	<b>10 638.3</b>
<b>2005</b>									
March	792.0	179.4	556.3	113.2	161.7	45.1	9.8	9.6	<b>1 867.0</b>
June	1 108.9	234.7	733.0	151.5	205.9	56.1	16.0	13.4	<b>2 519.5</b>
September	855.1	157.3	700.2	125.3	165.4	53.8	14.4	10.4	<b>2 081.9</b>
December	945.6	204.6	843.6	110.5	182.9	83.1	17.0	10.7	<b>2 398.0</b>
<b>2006</b>									
March	908.0	245.3	951.3	113.3	225.1	124.3	18.1	13.5	<b>2 598.9</b>
June	1 285.2	423.3	1 141.1	148.9	335.2	169.6	32.9	23.4	<b>3 559.6</b>
TOTAL FOR THE PUBLIC SECTOR									
<b>2003-04</b>	4 861.6	1 614.0	2 784.2	568.8	1 098.3	321.1	190.5	131.4	<b>11 569.9</b>
<b>2004-05</b>	5 277.0	1 953.4	3 673.8	826.3	1 443.1	324.4	188.9	136.3	<b>13 823.2</b>
<b>2005-06</b>	6 330.3	2 158.0	4 903.4	957.2	1 911.0	566.9	191.5	147.9	<b>17 166.1</b>
<b>2005</b>									
March	1 210.0	496.2	861.4	193.3	365.2	89.5	31.1	24.2	<b>3 270.8</b>
June	1 636.1	592.1	1 037.8	310.5	416.1	93.4	^ 64.1	38.6	<b>4 188.5</b>
September	1 421.1	370.2	1 011.1	198.9	389.7	78.0	^ 49.8	23.8	<b>3 542.6</b>
December	1 533.2	485.1	1 115.4	264.7	438.0	114.7	40.6	32.4	<b>4 024.1</b>
<b>2006</b>									
March	1 478.7	575.2	1 253.1	216.2	479.8	173.0	^ 35.9	^ 42.1	<b>4 254.0</b>
June	1 897.3	727.5	1 523.8	277.4	603.4	201.2	65.2	49.6	<b>5 345.5</b>

^ estimate has a relative standard error of 10% to less than 25% and should be used with caution

(a) Excludes construction work done for the public sector where the asset will be owned by the private sector on completion of the project. See paragraph 10 of the Explanatory Notes for further information.

## BY THE PRIVATE SECTOR

	<i>For the private sector</i>	<i>For the public sector</i>	<i>Total</i>	<i>By the public sector</i>	<i>Total for the public sector(a)</i>	<i>Total</i>
	%	%	%	%	%	%
VALUE OF WORK COMMENCED						
Roads, highways and subdivisions	12.2	3.8	7.3	4.7	3.0	<b>5.7</b>
Bridges	5.4	14.2	14.0	24.6	13.1	<b>12.9</b>
Railways	3.3	1.8	3.1	—	0.6	<b>2.6</b>
Harbours	0.7	9.4	1.1	—	8.9	<b>1.1</b>
Water storage and supply	15.5	9.3	8.6	42.7	20.1	<b>14.9</b>
Sewerage and drainage	15.0	20.1	12.0	12.2	10.5	<b>8.6</b>
Electricity generation, transmission and distribution	1.3	2.3	1.2	0.3	0.4	<b>0.8</b>
Pipelines	0.5	42.8	0.7	—	9.1	<b>0.7</b>
Recreation	13.6	17.2	12.5	14.9	11.4	<b>10.9</b>
Telecommunications	3.7	13.9	3.7	—	0.1	<b>0.5</b>
Oil, gas, coal and other minerals	0.3	—	0.3	1.0	1.0	<b>0.3</b>
Other heavy industry	4.6	82.6	4.6	—	82.6	<b>4.6</b>
Other	26.4	9.2	21.7	47.4	9.5	<b>21.3</b>
Total	1.5	3.5	1.4	1.6	1.6	<b>1.2</b>

## VALUE OF WORK DONE

Roads, highways and subdivisions	6.0	2.8	4.0	5.0	2.7	<b>3.3</b>
Bridges	4.0	10.8	10.4	17.7	9.4	<b>9.1</b>
Railways	1.9	0.6	0.8	—	0.3	<b>0.5</b>
Harbours	1.1	23.5	2.9	—	20.6	<b>2.9</b>
Water storage and supply	12.2	8.3	7.0	7.3	5.9	<b>5.5</b>
Sewerage and drainage	13.5	10.6	8.4	6.7	5.9	<b>5.5</b>
Electricity generation, transmission and distribution	2.9	1.4	2.1	0.3	0.4	<b>1.0</b>
Pipelines	0.4	32.1	0.6	—	1.6	<b>0.5</b>
Recreation	12.4	16.4	11.4	10.1	8.6	<b>9.2</b>
Telecommunications	3.6	6.1	3.4	—	0.1	<b>0.5</b>
Oil, gas, coal and other minerals	0.3	—	0.3	1.0	0.8	<b>0.3</b>
Other heavy industry	3.9	82.6	3.9	—	82.6	<b>3.9</b>
Other	17.0	9.7	13.3	47.8	10.0	<b>13.0</b>
Total	1.4	2.3	1.3	1.1	1.1	<b>1.0</b>

## VALUE OF WORK YET TO BE DONE

Roads, highways and subdivisions	3.5	1.9	2.2	3.8	1.7	<b>2.0</b>
Bridges	0.9	2.7	2.6	7.4	2.5	<b>2.5</b>
Railways	—	—	—	—	—	—
Harbours	0.3	4.3	0.3	—	3.8	<b>0.3</b>
Water storage and supply	8.5	3.2	3.0	19.0	9.7	<b>8.9</b>
Sewerage and drainage	11.3	12.1	10.8	13.6	9.3	<b>8.8</b>
Electricity generation, transmission and distribution	0.4	0.1	0.3	—	—	<b>0.3</b>
Pipelines	0.4	2.2	0.4	—	—	<b>0.2</b>
Recreation	19.6	7.9	18.1	7.2	6.5	<b>11.0</b>
Telecommunications	1.5	15.1	2.7	—	13.0	<b>2.6</b>
Oil, gas, coal and other minerals	0.1	—	0.1	—	—	<b>0.1</b>
Other heavy industry	0.6	—	0.6	—	—	<b>0.6</b>
Other	16.0	2.7	13.9	42.2	2.7	<b>13.9</b>
Total	0.5	1.2	0.5	3.2	1.3	<b>0.5</b>

— nil or rounded to zero (including null cells)

(a) Includes work done by the private sector for the public sector and work done by the public sector.

## RELATIVE STANDARD ERRORS, States and territories—By type of work

	<i>Roads, highways and subdivisions</i>	<i>Bridges, railways and harbours</i>	<i>Electricity generation, transmission etc. and pipelines</i>	<i>Water storage and supply, sewerage and drainage</i>	<i>Telecom- munications</i>	<i>Heavy industry</i>	<i>Recreation and other</i>	<b>Total</b>
	%	%	%	%	%	%	%	%
VALUE OF WORK COMMENCED								
NSW	15.4	6.3	1.4	21.2	0.8	4.9	20.3	<b>4.0</b>
Vic.	14.7	31.5	1.9	11.6	0.3	39.0	21.0	<b>6.6</b>
Qld	7.7	19.5	0.8	13.4	—	—	14.8	<b>2.9</b>
SA	5.3	1.2	0.1	12.9	—	—	22.7	<b>1.7</b>
WA	6.7	0.2	2.1	11.8	2.6	0.3	35.2	<b>0.7</b>
Tas.	3.7	9.6	1.1	11.6	—	46.4	25.4	<b>3.5</b>
NT	10.4	38.0	1.6	51.1	—	—	34.2	<b>4.6</b>
ACT	2.1	—	—	—	—	—	40.0	<b>2.2</b>
Total	5.7	2.1	0.8	9.5	0.5	0.5	9.9	<b>1.2</b>
VALUE OF WORK DONE								
NSW	3.8	1.9	1.1	8.3	0.8	3.1	18.1	<b>2.0</b>
Vic.	7.7	6.4	1.4	11.1	0.5	4.3	19.6	<b>3.7</b>
Qld	8.4	10.8	0.6	9.5	—	—	11.6	<b>2.5</b>
SA	5.6	0.5	0.2	9.7	0.1	—	21.7	<b>2.2</b>
WA	9.5	1.1	4.7	8.3	2.5	0.3	18.7	<b>1.2</b>
Tas.	3.5	15.3	0.9	21.8	—	50.6	22.5	<b>2.9</b>
NT	8.8	17.4	4.3	59.7	—	—	38.2	<b>1.1</b>
ACT	0.1	—	—	—	—	—	25.1	<b>1.6</b>
Total	3.3	1.8	0.8	4.5	0.5	0.4	7.7	<b>1.0</b>
VALUE OF WORK YET TO BE DONE								
NSW	5.1	0.9	1.6	13.9	—	1.5	19.7	<b>2.4</b>
Vic.	2.6	4.5	0.2	2.0	23.3	2.1	26.4	<b>1.9</b>
Qld	4.3	1.9	—	3.1	—	—	16.9	<b>1.2</b>
SA	17.6	—	—	0.3	—	—	6.4	<b>0.9</b>
WA	5.8	0.1	—	23.1	—	—	16.1	<b>0.3</b>
Tas.	6.3	8.5	—	2.4	—	34.4	39.3	<b>1.8</b>
NT	2.9	3.6	0.2	46.8	—	—	27.2	<b>0.8</b>
ACT	1.0	—	—	—	—	—	67.8	<b>1.7</b>
Total	2.0	0.3	0.3	6.3	2.6	0.1	9.1	<b>0.5</b>

— nil or rounded to zero (including null cells)



## EXPLANATORY NOTES

### INTRODUCTION

**1** This publication contains estimates of engineering construction activity in Australia by both public and private sector organisations. The estimates were compiled from the Engineering Construction Survey (ECS).

**2** These estimates together with results from the Australian Bureau of Statistics (ABS) Building Activity Survey provide a complete quarterly picture of building and construction activity in Australia.

### SCOPE AND COVERAGE

**3** The ECS aims to measure the value of all engineering construction work undertaken in Australia. This value excludes the cost of land and repair and maintenance activity, as well as the value of any transfers of existing assets, the value of installed machinery and equipment not integral to the structure and the expenses for relocation of utility services. However, a contract for the installation of machinery and equipment which is an integral part of a construction project is included.

**4** Where projects include elements of both building and engineering construction (for example, electricity generation, heavy industrial plant) every effort is taken to exclude the building component from these statistics.

**5** From the September quarter 2002, engineering construction activity in the External Territories of Australia is included in these statistics. Jervis Bay is included in New South Wales, while Christmas Island and Cocos (Keeling) Islands are included in Western Australia.

### STATISTICAL UNIT

**6** In the Engineering Construction Survey, the statistical unit used to represent businesses, and for which statistics are reported, is the Australian Business Number (ABN) unit, in most cases. The ABN unit is the business unit which has registered for an ABN, and thus appears on the Australian Taxation Office (ATO) administered Australian Business Register. This unit is suitable for ABS statistical needs when the business is simple in structure. For more significant and diverse businesses where the ABN unit is not suitable for ABS statistical needs, the statistical unit used is the Type of Activity Unit (TAU). A TAU is comprised of one or more business entities, sub-entities or branches of a business entity within an Enterprise Group that can report production and employment data for similar economic activities. When a minimum set of data items is available, a TAU is created which covers all the operations within an industry subdivision (and the TAU is classified to the relevant subdivision of the *Australian and New Zealand Standard Industrial Classification (ANZSIC)*). Where a business cannot supply adequate data for each industry, a TAU is formed which contains activity in more than one industry subdivision and the TAU is classified to the predominant ANZSIC subdivision.

**7** Further details about the ABS economic statistical units used in this survey, and in other ABS economic surveys (both sample surveys and censuses), can be found in Chapter 2 of the *Standard Economic Sector Classifications of Australia (SESCA) 2002* (cat. no. 1218.0).

### RELATIONSHIP WITH NATIONAL ACCOUNTS

**8** Data on the value of work done on the construction of new residential buildings, alterations and additions to residential buildings, private sector non-residential buildings (from *Building Activity, Australia* (cat. no. 8752.0)) and the value of engineering construction activity (from the Engineering Construction Survey) are the major source data which are used to compile the national accounts estimates for private gross fixed capital formation on dwellings, and other buildings and structures. However, there are some adjustments to the survey data which are made in the process of compiling these national account series. Allowances are made for the value of building activity which is out of scope of the Building Activity Survey and the Engineering Construction Survey. Such activity includes work done on projects which fall below the size cut-offs used for the Building Activity Survey and also the value of work done which is undertaken

## EXPLANATORY NOTES *continued*

### RELATIONSHIP WITH NATIONAL ACCOUNTS *continued*

without obtaining a building permit, either because such a permit is not required or because the requisite permit is not obtained. The national accounts estimates also make allowances for purchases (less sales) of buildings and other structures from (to) the public sector.

### SAMPLE REVISION

**9** The survey frames and samples are revised each quarter to ensure that they remain representative of the survey population. The timing for creating each quarter's survey frame is consistent with that of other ABS surveys. This provides for greater consistency when comparing data across surveys.

### CLASSIFICATION

**10** *Ownership.* Projects are classified as *private sector* or *public sector* according to the expected ownership of the project at the time of completion. When a project is undertaken as a Private Public Partnership (PPP), or other similar arrangement, these projects will be classified according to the expected ownership of the asset at the time of completion. Projects undertaken as PPP's may be classified as private sector although ownership of the asset could eventually reside with the public sector.

**11** *Sector.* The *public sector* includes Commonwealth Departments and Authorities, State Departments and Authorities, Local Government Authorities, Water, Sewerage and Electricity Authorities and government owned businesses and Statutory Authorities. All remaining organisations are classified as *private sector*. This publication contains separate estimates for the private sector and:

Commonwealth Government  
State and Territory Government  
Local Government.

**12** *Type of construction.* A project is classified to a category of construction without regard to end use. For example, a project involving coal handling equipment at an electricity generating plant is included under 'Heavy industry - Oil, gas, coal and other minerals' and not under 'Electricity generation, transmission and distribution'. Where a project involves more than one category of construction the project is included under the category which accounts for the major part of the contract in terms of value.

### RELIABILITY OF THE ESTIMATES

**13** Since the estimates for private sector and public sector organisations are based on a sample of organisations they are subject to sampling error; that is, they may differ from the figures that would have been obtained if information for all organisations for the relevant period had been included in the survey. A measure of the likely difference is given by the relative standard error (RSE) of each estimate. There are about 2 chances in 3 that a sample estimate will differ by less than one standard error from the figure that would have been obtained if all units had been included, and about 19 chances in 20 that the difference will be less than 2 standard errors. Approximate RSEs of the estimates are shown in tables 24 and 25.

**14** An example of the use of RSEs is as follows. If the total value of work done during the quarter is \$2,500m and the associated RSE is 0.5% then there are about 2 chances in 3 that the value which would have been obtained if there had been a complete collection would have been within the range \$2,488m to \$2,513m and about 19 chances in 20 that the value would have been within the range \$2,475m to \$2,525m.

**15** Estimates that have an estimated relative standard error between 10% and 25% are annotated with the symbol '^'. These estimates should be used with caution as they are subject to sampling variability too high for some purposes. Estimates with an RSE between 25% and 50% are annotated with the symbol '\*', indicating that the estimate should be used with caution as it is subject to sampling variability too high for most practical purposes. Estimates with an RSE greater than 50% are annotated with the symbol '\*\*' indicating that the sampling variability causes the estimates to be considered too unreliable for general use.

## EXPLANATORY NOTES *continued*

### RELIABILITY OF THE ESTIMATES *continued*

**16** The imprecision due to sampling variability, which is measured by the RSE, should not be confused with inaccuracies that may occur because of inadequacies in the source of information, imperfections in reporting by respondents, and errors made in the coding and processing of data. Inaccuracies of this kind are referred to as non-sampling error, and may occur in any enumeration whether it be a full count or only a sample. Every effort is made to reduce the non-sampling error to a minimum by the careful design of questionnaires, efforts to obtain responses for all selected organisations, and efficient operating procedures.

**17** Caution is advised in respect of the value of work commenced (and consequently, the value of work yet to be done) reported by the public sector. It is known that data reported for value of work commenced are a combination of the following: annual works budget estimates which are reported as commencements in the September quarter (and in some cases may subsequently be undertaken by the private sector); genuine commencements as defined in the Glossary, and reported quarterly; commencements being reported as equal to the value of work done for the quarter; commencements of major stages in the case of long-term projects.

### SEASONAL ADJUSTMENT

**18** Since seasonally adjusted statistics reflect both irregular and trend movements, an upward or downward movement in a seasonally adjusted series does not necessarily indicate a change of trend. Particular care should therefore be taken in interpreting individual quarter to quarter movements.

**19** From the June quarter 2003, the seasonally adjusted estimates are produced by the concurrent seasonal adjustment method which takes account of the latest available original estimates. The concurrent seasonal adjustment methodology replaces the forward factor methodology previously used, when seasonal factors were only revised following annual re-analysis. The concurrent method improves the estimation of seasonal factors and, therefore, the seasonally adjusted and trend estimates for the current and previous quarters. As a result of this improvement, revisions to the seasonally adjusted and trend estimates will be observed for recent periods. In most instances, the only noticeable revisions will be to the previous quarter and the same quarter of a year earlier.

**20** A more detailed review of concurrent seasonal factors will be conducted annually, generally prior to the release of data for the December quarter.

### TREND ESTIMATES

**21** Seasonally adjusted series can be smoothed to reduce the impact of the irregular component in the adjusted series. This smoothed seasonally adjusted series is called a trend estimate.

**22** The trend estimates are derived by applying a 7-term Henderson moving average to the seasonally adjusted series. The 7-term Henderson average (like all Henderson averages) is symmetric but, as the end of a time series is approached, asymmetric forms of the average are applied. Unlike weights of the standard 7-term Henderson moving average, the weights employed here have been tailored to suit the particular characteristics of individual series.

**23** While the smoothing technique described in paragraphs 19 and 20 enables trend estimates to be produced for recent quarters, it does result in revisions to the estimates for the most recent three quarters as additional observations become available. There may also be revisions because of changes in the original data and as a result of the re-estimation of the seasonal factors. For further information, see *Information Paper: A Guide to Interpreting Time Series—Monitoring Trends, 2003* (cat. no. 1349.0) or contact the Assistant Director, Time Series Analysis on Canberra (02) 6252 6540.

### CHAIN VOLUME MEASURES

**24** Chain volume estimates of the value of work done are presented in original, seasonally adjusted and trend terms in tables 1, 2, 3 and 4.

## EXPLANATORY NOTES *continued*

### CHAIN VOLUME MEASURES

*continued*

**25** While current price estimates of value of work done reflect both price and volume changes, chain volume estimates measure changes in value after the direct effects of price changes have been eliminated and therefore only reflect volume changes. The direct impact of the Goods and Service Tax is a price change, and hence is removed from chain volume estimates. The deflators used to revalue the current price estimates in this publication are derived from the same price data underlying the deflators compiled for the dwellings and new other building components, and the new engineering construction component, of the national accounts aggregate 'Gross fixed capital formation'.

**26** The chain volume measures of work done appearing in this publication are annually reweighted chain Laspeyres indexes referenced to current price values in a chosen reference year (currently 2004–05). The reference year is updated annually in the June quarter publication. Each year's data in the value of work done series are based on the prices of the previous year, except for the quarters of the latest incomplete year which are based upon the current reference year (i.e. 2004–05). Comparability with previous years is achieved by linking (or chaining) the series together to form a continuous time series. Further information on the nature and concepts of chain volume measures is contained in the *ABS Information Paper: Introduction of Chain Volume Measures in the Australian National Accounts* (cat. no. 5248.0).

**27** The factors used to seasonally adjust the chain volume measures are identical to those used to adjust the corresponding current price series.

### ACKNOWLEDGMENT

**28** ABS publications draw extensively on information provided freely by individuals, businesses, governments and other organisations. Their continued cooperation is very much appreciated: without it, the wide range of statistics published by the ABS would not be available. Information received by the ABS is treated in strict confidence as required by the *Census and Statistics Act 1905*.

### RELATED PRODUCTS

**29** Users may also wish to refer to the following publications:

*Building Activity, Australia* cat. no. 8752.0

*Building Approvals, Australia* cat. no. 8731.0

*Construction Work Done, Australia, Preliminary* cat. no. 8755.0

*Dwelling Unit Commencements, Australia, Preliminary* cat. no. 8750.0.

**30** Current publications and other products released by the ABS are listed in the *Catalogue of Publications and Products* (cat. no. 1101.0). The Catalogue is available from the National Information and Referral Service on 1300 135 070 or the ABS web site <<http://www.abs.gov.au>>. The ABS also issues a daily Release Advice on the web site which details products to be released in the week ahead.

### ABS DATA AVAILABLE ON REQUEST

**31** As well as the statistics included in this and related publications, the ABS may have other relevant data available on request. Inquiries should be made to the National Information and Referral Service on 1300 135 070.

### ABBREVIATIONS

\$m million dollars

ABN Australian Business Number

ABS Australian Bureau of Statistics

ACT Australian Capital Territory

ANZSIC Australian and New Zealand Standard Industrial Classification

ATO Australian Taxation Office

Aust. Australia

ECS Engineering Construction Survey

NSW New South Wales

## EXPLANATORY NOTES *continued*

NT	Northern Territory
qtr	quarter
Qld	Queensland
RSE	relative standard error
SA	South Australia
Tas.	Tasmania
TAU	type of activity unit
Vic.	Victoria
WA	Western Australia

## APPENDIX LIST OF ELECTRONIC TABLES

### ELECTRONIC TABLES

The following tables are available electronically via the ABS web site

<<http://www.abs.gov.au>>. Not all series in the table go back to the earliest start date.

### ENGINEERING CONSTRUCTION ACTIVITY

	Publication table no.	Electronic table no.	Start date
Value of work done, chain volume measures	1	1	September 1984
Value of work done, chain volume measures, change from previous period	2	n.a.	..
Value of work done, states and territories, chain volume measures	3	2	September 1986
Value of work done, states and territories, chain volume measures, change from previous period	4	n.a.	..
Value of work done	5	3	September 1986
Value of work done, change from previous period	6	n.a.	..
Value of work done, states and territories	7	4	September 1986
Value of work done, states and territories, change from previous period	8	n.a.	..
Activity, states and territories	9	5	September 1986
Activity, states and territories, change from previous period	10	n.a.	..
Activity, by type, Australia, original	11	6	September 1986
Work commenced by the private sector, by type, original	12	7	September 1986
Work done by the private sector, by type, original	13	8	September 1986
Work yet to be done by the private sector, by type, original	14	9	September 1986
Activity by the public sector, by type, original	15	10	September 1986
Activity for the public sector, by type, original	16	11	September 1986
Value of work commenced, by type and sector, New South Wales, original	17	12	September 1986
Value of work done, by type and sector, New South Wales, original	17	13	September 1986
Value of work yet to be done, by type and sector, New South Wales, original	17	14	September 1986
Value of work commenced, by type and sector, Victoria, original	18	15	September 1986
Value of work done, by type and sector, Victoria, original	18	16	September 1986
Value of work yet to be done, by type and sector, Victoria, original	18	17	September 1986
Value of work commenced, by type and sector, Queensland, original	19	18	September 1986
Value of work done, by type and sector, Queensland, original	19	19	September 1986
Value of work yet to be done, by type and sector, Queensland, original	19	20	September 1986
Value of work commenced, by type and sector, South Australia, original	20	21	September 1986
Value of work done, by type and sector, South Australia, original	20	22	September 1986
Value of work yet to be done, by type and sector, South Australia, original	20	23	September 1986
Value of work commenced, by type and sector, Western Australia, original	21	24	September 1986
Value of work done, by type and sector, Western Australia, original	21	25	September 1986
Value of work yet to be done, by type and sector, Western Australia, original	21	26	September 1986
Value of work commenced, by type and sector, Tasmania, original	22	27	September 1986
Value of work done, by type and sector, Tasmania, original	22	28	September 1986
Value of work yet to be done, by type and sector, Tasmania, original	22	29	September 1986
Value of work commenced, by type and sector, Northern Territory, original	23	30	September 1986
Value of work done, by type and sector, Northern Territory, original	23	31	September 1986
Value of work yet to be done, by type and sector, Northern Territory, original	23	32	September 1986
Value of work commenced, by type and sector, Australian Capital Territory, original	24	33	September 1986
Value of work done, by type and sector, Australian Capital Territory, original	24	34	September 1986
Value of work yet to be done, by type and sector, Australian Capital Territory, original	24	35	September 1986
Value of work done by the private sector, states and territories, original	25	36	September 1986
Value of work done by the public sector, states and territories, original	26	37	September 1986
Value of work done for the public sector, states and territories, original	27	38	September 1986

## GLOSSARY

<b>Bridges</b>	Includes those for the support of roads, railways, causeways and elevated highways.
<b>Electricity generation, transmission and distribution</b>	Includes power stations; substations; hydro-electric generating plants; associated work i.e. towers; chimneys; transmission and distribution lines.
<b>Harbours</b>	Includes boat and yacht basins; breakwaters; retaining walls; docks and piers; terminals; wharves; dredging works; marinas.
<b>Heavy industry</b>	This category is the total of 'Oil, gas, coal and other minerals' and 'Other heavy industry'.
<b>Oil, gas, coal and other minerals</b>	Includes construction of production, storage and distribution facilities; refineries; pumping stations; construction of mines.
<b>Other heavy industry</b>	Includes construction of chemical plants; blast furnaces; steel mills; other industrial processing plants; ovens.
<b>Pipelines</b>	Includes oil and gas pipelines; urban supply mains for gas; pipelines for refined petroleum products, chemicals, foodstuffs, etc.
<b>Railways</b>	Includes tracklaying; overhead power lines and signals; platforms; tramways; tunnels for underground railways; fuel hoppers.
<b>Recreation</b>	Includes golf courses; playing fields; racecourses; stadiums; swimming pools; landscaping; park construction.
<b>Roads, highways and subdivisions</b>	Includes parking areas; cycle paths; airport runways; pedestrian and vehicle overpasses; traffic lights; roundabouts; associated road drainage works; street and highway lighting; road resurfacing, kerbing and guttering, road tunnels.
<b>Sewerage and drainage</b>	Includes sanitary and storm sewers; sewage treatment plants; stormwater drains; drainage systems.
<b>Telecommunications</b>	Includes mobile phone, radio, television, microwave and radar transmission towers; telephone lines and underground cables; coaxial cables.
<b>Value of work commenced</b>	<p>A project is regarded as having commenced when the site works begin, with the following exceptions:</p> <ul style="list-style-type: none"> <li>■ Some public sector authorities are unable to report on this basis. In such cases, the authorities report the value of their annual works budget in September quarter each year.</li> <li>■ For very large projects, where a significant amount of work is done off-site, the project may be commenced before the site works begin.</li> </ul>
<b>Value of work done</b>	The value of work done for the private sector consists of the value of work done on prime contracts, plus speculative contracts, plus work done on own account. The value of work done for the public sector is the work done by the organisation's own workforce and subcontractors.
<b>Value of work yet to be done</b>	The value of outstanding work for the project at the end of the period. Rise and fall and other cost variations can lead to increases or decreases in the value of work yet to be done.
<b>Water storage and supply</b>	Includes dams; weirs; reservoirs; embankments for water diversion; water pipelines; mains and treatment plants; flood prevention and erosion; aqueducts; water conduits; systems conveying water to residences, commercial and industrial establishments.

## FOR MORE INFORMATION . . .

<i>INTERNET</i>	<b>www.abs.gov.au</b> the ABS web site is the best place for data from our publications and information about the ABS.
<i>LIBRARY</i>	A range of ABS publications are available from public and tertiary libraries Australia wide. Contact your nearest library to determine whether it has the ABS statistics you require, or visit our web site for a list of libraries.

## INFORMATION AND REFERRAL SERVICE

Our consultants can help you access the full range of information published by the ABS that is available free of charge from our web site, or purchase a hard copy publication. Information tailored to your needs can also be requested as a 'user pays' service. Specialists are on hand to help you with analytical or methodological advice.

<i>PHONE</i>	1300 135 070
<i>EMAIL</i>	client.services@abs.gov.au
<i>FAX</i>	1300 135 211
<i>POST</i>	Client Services, ABS, GPO Box 796, Sydney NSW 2001

## FREE ACCESS TO STATISTICS

All ABS statistics can be downloaded free of charge from the ABS web site.

<i>WEB ADDRESS</i>	<b>www.abs.gov.au</b>
--------------------	-----------------------



2876200006061

ISSN 1037 3993

RRP \$28.00